

---

# THE ELECTRONIC STAFF RECORD PROGRAMME



NATIONAL HEALTH SERVICE

## ESR-NHS0167 – ESR E- LEARNING CONTENT GUIDANCE AND STANDARDS

Information Classification: Public

Owner: Nick Adcock  
Author: Matthew Lye  
Creation Date: 10 March 2008  
Last Updated: 23 March 2022  
Next Update: 23 March 2023  
Version: 11

Approvals:

Name	Lee Pacey
Title	Director of Development and Operations

# 1 DOCUMENT CONTROL

## 1.1 CHANGE RECORD

Date	Author	Version	Change Reference
04/02/2008	Iain Harding	0.1	Initial Draft
16/02/2008	Iain Harding	0.2	Redrafted after comments
20/02/2008	Iain Harding	0.3	Review of document
21/02/2008	Iain Harding	0.4	Second review of document
21/02/2008	Iain Harding	0.5	Awaiting approval and Sign Off
29/02/2008	Stuart Fox	0.51	Updated document following feedback
06/02/2008	Iain Harding	0.52	Updated following feedback from e-LFH
10/03/08	Stuart Fox	0.9	Amended to v 0.9 for official approvals process
11/03/08	Stuart Fox	1.0	v1.0 issued for sign-off
25/03/08	Stuart Fox	1.1	Classification changed to Commercial in Confidence
25/03/08	Stuart Fox	2.0	Issued for Sign-off
06/11/08	Nick Moseley	2.1	Addition of section covering packaging of content
11/03/09	James Haddon	2.2	Addition of section covering screen resolution and amendments to SCORM calls.
24/02/10	James Haddon	3.0	Removed irrelevant sections, added checklist
19/10/10	James Haddon	3.1	Amended examples, various minor changes.
28/10/10	James Haddon	4.0	Issued for sign-off
25/07/11	James Haddon	4.1	Updated SCORM Calls, updated screens/formatting
1/9/11	Julie Bickerton	5.0	Uplifted to version 5.0 for publication
14/08/2013	Matthew Lye	5.1	Amended to include SCORM 2004 information, various minor changes.
20/08/2013	Matthew Lye	6.0	Uplifted to version 6.0 for approval
16/09/2013	Nick Adcock	6.0	Approved
02/12/2014	Matthew Lye	6.1	Amended to include information about JSP adapter, various minor changes
09/12/14	Nick Adcock	7.0	Approved
27/05/15	Matthew Lye	7.1	Amended due to change of ESR Service Provider
19/06/2015	Nick Adcock	8.0	Approved and uplifted
26/04/2016	Matthew Lye	8.1	Annual review,
02/03/2018	Matthew Lye	8.2	Annual review, addition of advice for e-Learning packages and testing local content in TPLY using Non JRE
01/06/2018	Matthew Lye	8.3	Added section on common issues for e-Learning developers
08/11/2018	Nick Adcock	9.0	Approved
23/11/2019	Matthew Lye	9.1	Updates following review
08/01/2019	Nick Adcock	10.0	Approved for uplift following review
17/09/2021	Matt Lye	10.1	Reviewed, no changes
23/03/2022	Nick Adcock	11	Version uplift

## 1.2 REVIEWERS

Name	Position
James Haddon	NHS ESR Development Team
Chris Moorley	NHS ESR Development Team
Nicole Stacey	NHS ESR Development Team
	NHS ESR Functional Account Managers

## 1.3 DISTRIBUTION

Copy No.	Name	Location
1	Library Master	NHS Document Library

---

## 2 CONTENTS

---

<b>1</b>	<b>DOCUMENT CONTROL .....</b>	<b>2</b>
1.1	CHANGE RECORD	2
1.2	REVIEWERS	2
1.3	DISTRIBUTION	2
<b>2</b>	<b>CONTENTS .....</b>	<b>3</b>
<b>3</b>	<b>PURPOSE AND BACKGROUND .....</b>	<b>5</b>
3.1	INTRODUCTION	5
3.2	CONTENT STANDARDS	5
3.3	ACCESSIBILITY STANDARD	<b>ERROR! BOOKMARK NOT DEFINED.</b>
<b>4</b>	<b>HOW ESR PLAYS CONTENT .....</b>	<b>6</b>
4.1	THE OLM PLAYER	6
4.2	NAVIGATIONAL CONTROL	6
4.3	EXITING THE COURSE	6
<b>5</b>	<b>CONTENT DEPLOYMENT GUIDELINES .....</b>	<b>8</b>
5.1	ENSURING ACCURATE TRACKING	8
5.2	PRE-REQUISITES	8
5.3	USING EXISTING CONTENT	8
5.4	BUILDING CONTENT	9
5.5	FRAMES	9
5.6	SCREEN RESOLUTION	9
5.7	TESTS	9
5.8	UNIX SERVERS AND CASE SENSITIVITY	10
<b>6</b>	<b>TRACKING LEARNER PROGRESS IN CONTENT .....</b>	<b>11</b>
6.1	AUTOMATIC TRACKING	12
6.2	SCORM TRACKING	12
6.3	SCORM ADAPTERS	12
6.4	ESR SCORM IMPLEMENTATION	13
6.4.1	SCORM 1.2 Calls Compatible with ESR.....	13
6.4.2	SCORM 1.2 Calls not Compatible with ESR .....	13
6.4.3	SCORM 2004 .....	15
<b>7</b>	<b>INSTALLING E-LEARNING CONTENT ON HOSTS.....</b>	<b>20</b>
<b>8</b>	<b>APPENDIX 1 - CHECKLIST .....</b>	<b>22</b>
<b>9</b>	<b>APPENDIX 2 - SETTING UP A LOCAL SERVER FOR TESTING CONTENT .....</b>	<b>23</b>
9.1	INSTALL LOCAL SERVER AND PHP SCORM ADAPTER	23
9.2	UPLOAD CONTENT TO LOCAL SERVER	25
9.3	SET UP THE CONTENT IN TPLY	25
<b>10</b>	<b>APPENDIX 3 - USING ARTICULATE PRODUCTS WITH ESR.....</b>	<b>27</b>
10.1	OVERVIEW	27
10.2	PUBLISH SETTINGS	27
10.3	REPORTING	28
10.4	TRACKING	29
10.5	BOOKMARKING - PROMPT TO RESUME	31

10.5.1	Exceeding SCORM Suspend Data Limits .....	33
10.5.2	Solutions .....	33
<b>11</b>	<b>APPENDIX 4 - USING ADOBE CAPTIVATE WITH ESR .....</b>	<b>34</b>
11.1	OVERVIEW	34
11.2	PUBLISH SETTINGS	34
11.3	SCORM VERSION	34
11.4	MANIFEST	34
11.5	TEMPLATE	35
11.6	STATUS	35
11.7	SUCCESS/COMPLETION CRITERIA	35
11.8	LMS ADVANCED SETTINGS	37
11.9	PUBLISH COURSE	38
11.10	CUSTOM COMPLETION CRITERIA	38
<b>12</b>	<b>APPENDIX 5 - USING LECTORA WITH ESR.....</b>	<b>40</b>
12.1	OVERVIEW	40
12.2	INITIAL SET UP	40
12.3	ADD REQUIRED ACTIONS	41
12.4	SETTINGS WITH NO ASSESSMENT	42
12.5	SETTINGS WITH AN ASSESSMENT	44
12.6	PUBLISH YOUR COURSE	44
12.7	UPDATES TO LECTORA FILES	46
12.7.1	Existing e-Learning Packages.....	49

## 3 PURPOSE AND BACKGROUND

---

### 3.1 INTRODUCTION

ESR provides the ability for NHS Organisations to deliver e-Learning content to individuals with a person record.

E-Learning content from national providers is available together with the ability for Organisations to deliver locally produced e-Learning content.

This document provides guidance and information to e-Learning developers to enable them to procure or create content, internally through their own development teams, and communicate effectively with external suppliers.

### 3.2 CONTENT STANDARDS

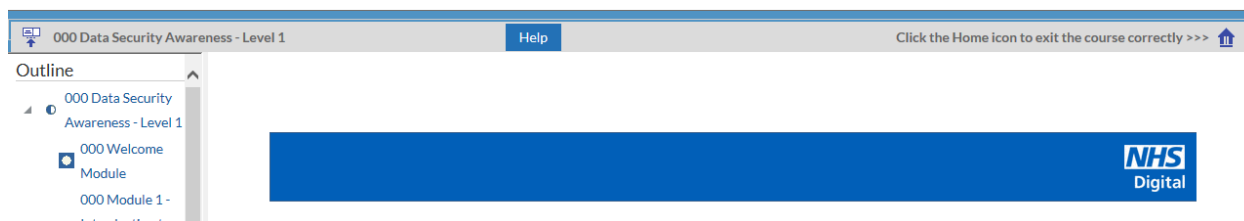
Where organisations are creating web based content they should try to ensure that it meets with guidelines defined for HTML content by the [World Wide Web Consortium \(W3C\)](#) and with [Web Content Accessibility Guidelines \(WCAG\)](#) for accessibility.

Please note: NHS Digital has developed a Standard in order to help comply with the Equality Act 2010 in the design, development and delivery of training materials. More information on these standards can be found at <https://digital.nhs.uk/services/training-quality-improvement/education-and-training-standards-and-benchmarking>

## 4 HOW ESR PLAYS CONTENT

### 4.1 THE OLM PLAYER

e-Learning is displayed in ESR in the OLM Player. This generates the toolbar and outline frames from data about the content and the learner stored in the database. Each learning object in the course outline has a content location stored in the database. When a learner selects a learning object in the outline, the corresponding content is loaded from a content server into the content frame on the right.



### 4.2 NAVIGATIONAL CONTROL

Individual learning objects may have multiple pages and navigation is controlled by content. Navigation between learning objects is handled by the OLM Player from the outline on the left. Content should not contain internal links to other learning objects as the content will not be tracked correctly.

### 4.3 EXITING THE COURSE

The OLM Player has its own exit button in the shape of a 'home' icon, this means that Exit buttons are not required in content.



Once clicked, this home icon will return the learner back to the point where they launched the e-Learning from.,. In order for content to track correctly, a user-initiated event is normally required upon closing the content to record the student's current location, status and score. This can be achieved by placing the function required in the 'onunload' and 'onbeforeunload' HTML events. An example of how this could be used is shown below:

```
<body onunload="stopLMS();" onbeforeunload="stopLMS();">

<script language="javascript">
function stopLMS() {
API.LMSCommit("");
API.LMSFinish("");
}
</script>
```

In SCORM 2004

```
<body onunload="stopLMS();" onbeforeunload="stopLMS();">
```

```
<script language="javascript">
function stopLMS(){
API.Commit("");
API.Terminate("");
}
</script>
```



If the content has an exit button, it should not attempt to close the OLM Player window. Instead the exit button should make the relevant calls, and then instruct the user to close the course manually

## 5 CONTENT DEPLOYMENT GUIDELINES







### 5.1 ENSURING ACCURATE TRACKING

Content in ESR can be set up in two ways.

1. Course linked to a single learning object

 504 Mindfulness		Published	1 Offerings
---	---	-----------	-------------

2. Course linked to a parent learning object with multiple children

 504 Immunology		Published	1 Offerings
 504 Immunology		Published	
 504 Immunology Assessment		Published	

Where a course has a parent learning object, it is important to ensure that the parent learning object does not contain a URL.

#### Content

Type **URL Access**  
Starting URL  
Player Timeout **210**

The completion status and time played for the parent learning object is calculated by aggregating the completion status and time spent from the child learning objects.

When all child learning objects are completed, the parent learning object is marked complete and reflects the total time the course has been played.

### 5.2 PRE-REQUISITES


Where a course has child learning objects, the learner can play these in any order. If a learner must complete a particular child object before playing others, then this can be set as a prerequisite.

[Content](#) > [504 Immunology Assessment: Player Prerequisites](#) >

#### 504 Immunology Assessment: Add Player Prerequisite

Define player prerequisites for this content object. Player prerequisites are courses or topics that must be completed before a learner can play this content object.

\* Indicates required field

\* Learning Object |  

### 5.3 USING EXISTING CONTENT



Organisations have many existing resources that can be used as e-Learning content. A learning object can point to files including Microsoft PowerPoint, HTML pages, Microsoft Word, PDF etc. A course can easily be constructed as a series of these types of resources.

## 5.4 BUILDING CONTENT

A learning object may have multiple pages of HTML content. ESR holds the location of the first (e.g. index.html) HTML file that is launched for the object.

## 5.5 FRAMES

To play correctly in the OLM Player, content must be frame-friendly. The content may contain browser frames of its own and may manage those frames, it cannot reference frames that ESR provides.

In particular, the content should never make reference to the window.top JavaScript object or use `_top` as the target for a URL as this will cause errors.

If errors occur, the code can be revised by looking for error messages produced in the browser.

In Internet Explorer, a warning icon is shown in the bottom left hand corner of the browser window. Double-clicking on this icon shows the relevant JavaScript error that occurred. This may assist in determining which line of code is causing the error.

## 5.6 SCREEN RESOLUTION

Most users in the NHS have a screen resolution of no less than 1024x768 pixels. Content can be designed to resize to the viewable area or written to fit in the space available. If content is too large, users will have to use scroll bars to use content effectively.

The screen real-estate available for users to see will depend on the structure of the content. In ESR, there are two bars that are displayed:

Outline – approximately 210 pixels wide, located on the left of the screen - this is only required where content has multiple learning objects

Toolbar - approximately 45 pixels tall, located at the top of the screen – this contains additional help for learners and the exit button. It is recommended that this is always displayed.

The space available for the content is summarised below:

	Space Available
With outline	810 (w) x 610 (h)
Without outline	1020 (w) x 610 (h)

## 5.7 TESTS

Tests enable you to create and manage tests either as learning objects within a course, or as courses in their own right. Tests can be scored, or set up as surveys for which there is no score. Tests are made up of questions stored in a question bank created in ESR.

ESR handles presentation of the test questions, scores the test, and records the learner's results.

## **5.8 UNIX SERVERS AND CASE SENSITIVITY**

All URLs for UNIX web servers are case sensitive, but URLs for Microsoft Windows web servers are not. Frequently, content is developed in a Windows environment and may not be tested on UNIX servers prior to its release.

## 6 TRACKING LEARNER PROGRESS IN CONTENT

---

The tracking of a learner's progress is directly tied to the learning objects within a course. When a learner plays a course for the first time, an attempt record for the learner is created in ESR. This stores information such as the time spent, completion status, and score for that learning object. When the learner leaves the learning object the attempt record is finished and a performance record for the learning object is created (or updated if the content has been played before). It is the data stored in the performance record that a learner sees in ESR, showing progress with the parent and child learning objects.

### Outline

---

- ▾ 504 Paramedic - Pain Management [Status: Incomplete, Time: 01:10:11]
  - ⊗ 504 The Physiological Pathways of Pain [Status: Failed, Time: 00:07:02, Score: 60]
  - 504 The Psychological and Sociological Impact of Pain [Status: Passed 13-MAR-2018, Time: 00:09:51, Score: 80]

The performance record is updated to reflect learner progress up to the point where an attempt is marked as completed or passed. At that point, the performance record completion status is updated with the latest status (and optionally a score) and cannot be modified by subsequent attempts of a learning object. The time spent on the performance record continues to be updated however, based on subsequent learner attempts of the learning object.

ESR has two methods for tracking a learner's progress through content: Automatic tracking and SCORM tracking. A learning object can track, for each learner, a completion status (not attempted, incomplete, completed, passed, failed, browsed), the time spent in the content, and a score.

ESR can hold a Mastery Score against a Learning Object, where this is entered, it will take precedence over one defined in the content.

A mastery score of 80 has been entered against the learning object.

### General

---

Identifier	1013
Name	504 Avoiding Term Admissions Into Neonatal Units
Published Status	Published
Tracking Type	SCORM 1.2
Duration	
Language	English
Description	
Objectives	
Audience	
Hardware Software Requirements	
Mastery Score	80

A user plays the content and scores 75, the content returns a status of 'Completed' and a score of 75. ESR will ignore the status and set the user's status to 'Failed' as they have not reached the mastery score.

## 6.1 AUTOMATIC TRACKING

ESR can automatically track the launch of and time spent in any content. When set to automatic tracking, each topic is marked as completed as soon as it is launched. This may be useful for playing and reporting on content that is not SCORM compliant such as a simple web page or a PDF document.

## 6.2 SCORM TRACKING

For more detailed tracking, ESR supports the CMI data model in the SCORM specification published by the ADL. (See <https://www.adlnet.gov/scorm/> for more information). SCORM tracking uses JavaScript calls for the content to communicate with the LMS.

## 6.3 SCORM ADAPTERS

ESR does not store e-Learning content so it must be on a separate web server.

The JavaScript security model does not allow scripts in frames coming from different domains to communicate. To overcome this limitation, ESR uses a SCORM Adapter. The adapter is a set of files that are stored on the remote server with the content files.

Details on the types of SCORM adapter available to organisations and content providers are available here, <https://my.esr.nhs.uk/dashboard/web/esrweb/e-learning-technical-information>, along with the steps for setup. Wherever possible organisations should use the Non JRE SCORM adapters as these enable e-Learning to be played in internet enabled PCs and mobile devices.

When SCORM compliant content is launched, ESR scans its list of registered SCORM adapters. If the content comes from a location with a registered SCORM adapter, the URL is automatically rewritten to redirect the learner's browser to the SCORM adapter files, which in turn loads the content files.

### Installing SCORM 1.2 and SCORM 2004 Adapters

If both SCORM 1.2 and 2004 content are held on servers then both adapters must be installed and registered separately as described above.

SCORM 1.2 and SCORM 2004 Adapters must be placed in separate directories on the server eg JSAdapter12\_php/Oracle\_SCORM\_Adapter\_JS.html and [https://www.myorganisation.nhs.uk/elearning/JSAdapter12\\_php/Oracle\\_SCORM\\_2004\\_Adapter\\_JS.html](https://www.myorganisation.nhs.uk/elearning/JSAdapter12_php/Oracle_SCORM_2004_Adapter_JS.html)

The URL for the SCORM 2004 adapter must contain 2004 in the address for it to be recognised as a SCORM 2004 adapter.

Please refer to the next section for ESR's implementation of the SCORM specification.

The CMI data model allows statuses and scores to be set against each content object. The SCORM specification uses the term "SCO" (Shareable Content Object), which is equivalent to a learning object in ESR. The CMI API also allows the content to query ESR for data about the learner and their past interactions with the content.

As specified by the ADL for SCORM tracking, the content must contain code to find the API, initialise the API, get and set values as appropriate, and finalise transaction upon exit. The specific technology used by the content to implement its tracking logic is not important, as long as it can make the correct calls via JavaScript to meet the SCORM specification.

## 6.4 ESR SCORM IMPLEMENTATION

The SCORM specification has an extensive list of data elements, some mandatory and many optional. ESR is “LMS RTE 2”, this means that it supports the mandatory data elements of the SCORM specification only. The data elements supported in ESR are listed below:

### 6.4.1 SCORM 1.2 Calls Compatible with ESR

Type	Calls	Comments
Core	exit, score (raw only) ,credit, lesson_location, session_time, total_time, lesson_mode, student_id,student_name, lesson_status, entry	
N/A	suspend_data, launch_data,	
Objectives	score (raw only), status, id	Each objective must be given an id).
LMS	LMSGetLastError, LMSSetValue, LMSGetValue, LMSGetLastError, LMSGetErrorString, LMSGetDiagnostic, LMSCommit, LMSFinish, LMSInitialize	

Content running in ESR should ideally record as a minimum: lesson\_status, lesson\_location and score (where an assessment is included).

### 6.4.2 SCORM 1.2 Calls not Compatible with ESR

Type	Calls	Comments
Core	score.min, score.max	
N/A	comments, comments_from_lms	
Objectives	score.max, score.min	
Student_data	mastery_score, max_time_allowed, time_limit_action	
Student_preference	audio, language, speed, text	
Interactions	id, objectives, time, type, correct_response, weighting, student_response, result, latency	

Should any of the above calls be made to ESR, the LMS will respond with:  
"LMS Error: 401 - Not implemented error"

This should not prevent the content from functioning. Content should be designed so that if an LMS does not support one of the optional calls above, then it should continue with the calls that are supported.

For example:

Content calls `LMSGetValue("cmi.core.score.max")`

LMS will experience the following error: "LMS Error: 401 - Not implemented error" but return a null value ("" ) to the content.

The content should be designed so that if a null value is returned, it should continue without the information (i.e. in this example, not knowing the maximum score should not prevent the content from setting the user's attained score).

Core Element Name	Definition
student_id	The username of the user.
student_name	The student's name.
lesson_location	This corresponds to the lesson's exit point passed to the CMI system the last time the learner experienced the lesson.
Credit	Indicates whether the content gives credit for completion.
lesson_status	The status of the lesson – i.e. Incomplete, Completed.
entry	Indication of whether the student has been in the lesson before.
exit	Indication of how or why the student left the session
score.raw	Numerical representation of student performance in lesson. May be unprocessed raw score.
total_time	Accumulated time of all the student sessions in the lesson.
lesson_mode	Identification of student related information that may be used to change the behaviour of the lesson.
suspend_data	Unique information generated by the lesson during previous uses that is needed for the current use. Please note, as per SCORM 1.2 standards, ESR limits the amount of data stored in this field to 4096 characters. Attempts to commit more than this data may result in error or truncation of the data.
launch_data	Unique information generated at the lesson's creation that is needed for every use.
session_time	Time spent in the lesson during the session that is ending.

Note that the CMI terms "lesson" and "AU" (assignable unit) refer to a learning object in ESR.

Objective Element Name	Definition
id	A unique identifier for each objective. Note: if you are using objectives in your content, each objective MUST have an id, otherwise the communication may fail.
score	Indication of the score obtained by the student after each attempt to master an objective.
raw	This may be an unprocessed or processed indicator of how the student performed with the AU's interactions (related to the objective) experienced.
max	This is the largest score the student could have with the AU's interactions (related to the objective) experienced.

min	This is the smallest score that the student could have achieved with the AU's interactions (related to the objective) experienced.
status	Indication of the status of an objective.

### 6.4.3 SCORM 2004

ESR is compatible with SCORM 2004 4<sup>th</sup> edition and all calls are mandatory in this standard.

SCORM 2004 enables a learner to record multiple attempts on an e-learning course. Rather than seeing completed against a course they will have a status of Multiple.

Clicking on the Multiple hyperlink will enable them to view each individual attempt

Type	Calls
<b>Core</b>	cmi._version, cmi.completion_status, cmi.completion_threshold, cmi.credit, cmi.entry, cmi.exit, cmi.launch_data, cmi.learner_id, cmi.learner_name, cmi.location, cmi.max_time_allowed, cmi.mode, cmi.progress_measure, cmi.scaled_passing_score, cmi.score.scaled, cmi.score.raw, cmi.score.min, cmi.score.max, cmi.session_time, cmi.success_status, cmi.suspend_data, cmi.time_limit_action, cmi.total_time
<b>Objectives</b>	cmi.objectives._count, cmi.objectives.n.id, cmi.objectives.n.score._children, cmi.objectives.n.score.scaled, cmi.objectives.n.score.raw, cmi.objectives.n.score.min, cmi.objectives.n.score.max, cmi.objectives.n.success_status, cmi.objectives.n.completion_status, cmi.objectives.n.progress_measure, cmi.objectives.n.description
<b>Interactions</b>	cmi.interactions._count, cmi.interactions.n.id, cmi.interactions.n.type, cmi.interactions.n.objectives._count, cmi.interactions.n.objectives.n.id, cmi.interactions.n.timestamp, cmi.interactions.n.correct_responses._count, cmi.interactions.n.correct_responses.n.pattern, cmi.interactions.n.weighting, cmi.interactions.n.learner_response, cmi.interactions.n.result, cmi.interactions.n.latency, cmi.interactions.n.description
<b>Navigation</b>	adl.nav.request, adl.nav.request_valid.continue, adl.nav.request_valid.previous, adl.nav.request_valid.choice.{target=}, adl.nav.request_valid.jump.{target=}
<b>Comments</b>	cmi.comments_from_learner._count, cmi.comments_from_learner.n.comment, cmi.comments_from_learner.n.location, cmi.comments_from_learner.n.timestamp, cmi.comments_from_lms._children, cmi.comments_from_lms._count, cmi.comments_from_lms.n.comment, cmi.comments_from_lms.n.location, cmi.comments_from_lms.n.timestamp
<b>Learner Preferences</b>	cmi.learner_preference.audio_level, cmi.learner_preference.audio_level, cmi.learner_preference.audio_level, cmi.learner_preference.audio_level
<b>LMS</b>	Initialize, Terminate, GetValue, SetValue, Commit, GetLastError, GetErrorString, GetDiagnostic

<b>Element Name</b>	<b>Comments</b>
cmi._version	Represents the version of the data model
cmi.comments_from_learner._children	Listing of supported data model elements
cmi.comments_from_learner._count	Current number of learner comments
cmi.comments_from_learner.n.comment	Textual input
cmi.comments_from_learner.n.location	Point in the SCO to which the comment applies
cmi.comments_from_learner.n.timestamp	Point in time at which the comment was created or most recently changed
cmi.comments_from_lms._children	Listing of supported data model elements
cmi.comments_from_lms._count	Current number of comments from the LMS
cmi.comments_from_lms.n.comment	Comments or annotations associated with a SCO
cmi.comments_from_lms.n.location	Point in the SCO to which the comment applies
cmi.comments_from_lms.n.timestamp	Point in time at which the comment was created or most recently changed
cmi.completion_status	Indicates whether the learner has completed the SCO
cmi.completion_threshold	Used to determine whether the SCO should be considered complete
cmi.credit	Indicates whether the learner will be credited for performance in the SCO
cmi.entry	Asserts whether the learner has previously accessed the SCO
cmi.exit	Indicates how or why the learner left the SCO
cmi.interactions._children	Listing of supported data model elements
cmi.interactions._count	Current number of interactions being stored by the LMS
cmi.interactions.n.id	Unique label for the interaction
cmi.interactions.n.type	Which type of interaction is recorded
cmi.interactions.n.objectives._count	Current number of objectives (i.e., objective identifiers) being stored by the LMS for this interaction
cmi.interactions.n.objectives.n.id	Label for objectives associated with the interaction
cmi.interactions.n.timestamp	Point in time at which the interaction was first made available to the learner for learner interaction and response
cmi.interactions.n.correct_responses._count	Current number of correct responses being stored by the LMS for this interaction



cmi.interactions.n.correct_responses.n.pattern	One correct response pattern for the interaction
cmi.interactions.n.weighting	Weight given to the interaction relative to other interactions
cmi.interactions.n.learner_response	Data generated when a learner responds to an interaction
cmi.interactions.n.result	Judgment of the correctness of the learner response
cmi.interactions.n.latency	Time elapsed between the time the interaction was made available to the learner for response and the time of the first response
cmi.interactions.n.description	Brief informative description of the interaction
cmi.launch_data	Data provided to a SCO after launch, initialized from the data. From LMS manifest element
cmi.learner_id	Identifies the learner on behalf of whom the SCO was launched
cmi.learner_name	Name provided for the learner by the LMS
cmi.learner_preference._children	Listing of supported data model elements
cmi.learner_preference.audio_level	Specifies an intended change in perceived audio level
cmi.learner_preference.language	The learner's preferred language for SCOs with multilingual capability
cmi.learner_preference.delivery_speed	The learner's preferred relative speed of content delivery
cmi.learner_preference.audio_captioning	Specifies whether captioning text corresponding to audio is displayed
cmi.location	The learner's current location in the SCO
cmi.max_time_allowed	Amount of accumulated time the learner is allowed to use a SCO
cmi.mode	Identifies one of three possible modes in which the SCO may be presented to the learner
cmi.objectives._children	Listing of supported data model elements
cmi.objectives._count	Current number of objectives being stored by the LMS
cmi.objectives.n.id	Unique label for the objective
cmi.objectives.n.score._children	Listing of supported data model elements
cmi.objectives.n.score.scaled	Number that reflects the performance of the learner for the objective
cmi.objectives.n.score.raw	Number that reflects the performance of the learner, for the objective, relative to the range bounded by the values of min and max

cmi.objectives.n.score.min	Minimum value, for the objective, in the range for the raw score
cmi.objectives.n.score.max	Maximum value, for the objective, in the range for the raw score
cmi.objectives.n.success_status	Indicates whether the learner has mastered the objective
cmi.objectives.n.completion_status	Indicates whether the learner has completed the associated objective
cmi.objectives.n.progress_measure	Measure of the progress the learner has made toward completing the objective
cmi.objectives.n.description	Provides a brief informative description of the objective
cmi.progress_measure	Measure of the progress the learner has made toward completing the SCO
cmi.scaled_passing_score	Scaled passing score required to master the SCO
cmi.score._children	Listing of supported data model elements
cmi.score.scaled	Number that reflects the performance of the learner
cmi.score.raw	Number that reflects the performance of the learner relative to the range bounded by the values of min and max
cmi.score.min	Minimum value in the range for the raw score
cmi.score.max	Maximum value in the range for the raw score
cmi.session_time	Amount of time that the learner has spent in the current learner session for this SCO
cmi.success_status	Indicates whether the learner has mastered the SCO
cmi.suspend_data	Provides space to store and retrieve data between learner sessions
cmi.time_limit_action	Indicates what the SCO should do when cmi.max_time_allowed is exceeded
cmi.total_time	Sum of all of the learner's session times accumulated in the current learner attempt
adl.nav.request	Navigation request to be processed immediately following Terminate()
adl.nav.request_valid.continue	Used by a SCO to determine if a Continue navigation request will succeed.
adl.nav.request_valid.previous	Used by a SCO to determine if a Previous navigation request will succeed.
adl.nav.request_valid.choice.{target=}	Used by a SCO to determine if a Choice navigation request for the target activity will succeed.

adl.nav.request_valid.jump.{target=}	Used by a SCO to determine if a Jump navigation request for the target activity will succeed.
--------------------------------------	---

## 7 INSTALLING E-LEARNING CONTENT ON HOSTS

---

On ESR, the content must not be in zipped format, the files will need to be loaded into a separate folder that can be referenced with a unique starting URL.

All course content must be loaded at the same level or below that of the SCORM adapters in the hierarchy on the content server as in the example below:

[https://www.ourserver.com/ourcourses/JSAdapter12\\_php/Oracle\\_SCORM\\_Adapter\\_JS.html](https://www.ourserver.com/ourcourses/JSAdapter12_php/Oracle_SCORM_Adapter_JS.html)

<https://www.ourserver.com/ourcourses/course1/index.html>

<https://www.ourserver.com/ourcourses/course2/index.html>

<https://www.ourserver.com/ourcourses/course3/index.html>

Courses must also be set up within the ESR course catalogue. Where possible it is recommended to keep the number of learning objects in a course to a minimum. For full instructions on how to do this refer to Quick Guide to Setting up Local e-Learning.

NHS organisations are advised, where possible to test e-Learning in the TPLY environment before release into the production environment commences.

---

## 8 COMMON ISSUES FOR E-LEARNING DEVELOPERS

---

### 8.1 CONTENT DOES NOT DISPLAY CORRECTLY IN INTERNET EXPLORER

There may be certain content that does not display correctly or certain functionality does not work as expected, for example, drag and drop functionality. Where this is the case, it is recommended that the content is tested in a different browser. If the content can play and track correctly then it is recommended that a Service Request is raised for investigation. For Internet Explorer users, ticking the Open in New Window flag on the Learning Object form should enable the content to work as expected

Note - Changing this setting will mean that content will not open in the main player window for all users.

### 8.2 COURSE NOT TRACKING CORRECTLY

Where a course has been set to track as SCORM 1.2 but does not appear to be tracking correctly, this may be because the correct URL is not being used.

The Starting URL to use in ESR can be identified from the imsmanifest.xml file.

The manifest file can be found in the folder which contains the course files which will be uploaded to a server. In the resources section of the manifest, find the name of the file for the href attribute. This will be the starting URL you must use.

```
<resources>
  <resource identifier="SCO_ID1_RES" type="webcontent" href="index_scorm.html" adlcp:scormtype="sco">
    <metadata>
      <schema>ADL SCORM</schema>
      <schemaversion>1.2</schemaversion>
      <adlcp:location>metadata.xml</adlcp:location>
    </metadata>
    <file href="ar/Mouse.mp3"/>
    <file href="index_scorm.html"/>
    <file href="scormdriver.js"/>
    <file href="browsersniff.js"/>
  </resource>
</resources>
```

So if the file is uploaded to <https://www.contentserver.com/content/course1/>:

The starting URL in this example will be  
[https://www.contentserver.com/content/course1/index\\_scorm.html](https://www.contentserver.com/content/course1/index_scorm.html)

## 9 APPENDIX 2 - CHECKLIST

This checklist is for e-Learning developers to ensure content will perform correctly in ESR.

Item	Reason
Content does not reference OLM Player window (using top.window or parent.window)	Course will reside on a different domain to LMS. JavaScript is not allowed to cross-domains. 'Permission Denied' error will occur. This may occur with content produced with Lectora, see guidance in Appendix 5.
Content does not have an 'exit' button	The LMS has its own exit button (a 'home' icon at the top right). Appropriate calls should be made on the HTML 'onunload' and 'onbeforeunload' events to record status, bookmarking etc. See section 4.3 for further detail / example.
Ideally content should record as a minimum lesson_status, lesson_location and score (where an assessment is included).	For reporting purposes it must be clear whether a user has completed a piece of e-Learning and that any assessment score is recorded. Bookmarking should also be included so that a user can recommence a course on the page they left.
Content does not make any unsupported calls	ESR is an RTE 2 LMS. ESR will only support the mandatory SCORM 1.2 calls.  Should the content make any of these calls (for support in other LMS), you should ensure the content does not display any JavaScript alerts if they error in the OLM player. (Otherwise a 'Not Implemented' error will be displayed).
Content is confirmed as SCORM 1.2 or 2004 compliant using the Content Package test in the free Advanced Distributed Learning (ADL) Conformance Test Suite or by using SCORM cloud.	ESR should not be used in the first instance to check if content is SCORM compliant
Content keeps to a minimum number of Learning Objects arranged in a simple hierarchy where possible	Learning objects and the parent child hierarchy have to be set up manually on ESR since there is no facility to import the course manifest metadata.
Content does not attempt to resize itself	Content is displayed in the same window as the OLM Player. Should the content try to modify the OLM Player window in any way, a 'permission denied' error will occur.
Content resolution is set within the recommended dimensions	Users will get frustrated if they have to use the scroll bars to view and operate content

---

## 10 APPENDIX 3 - SETTING UP A LOCAL SERVER FOR TESTING CONTENT

---

One of the requirements for using the non-JRE adapters is that the servers must be web facing. TPLY is not web facing so cannot be used for testing with the non-JRE adapters in a conventional way.

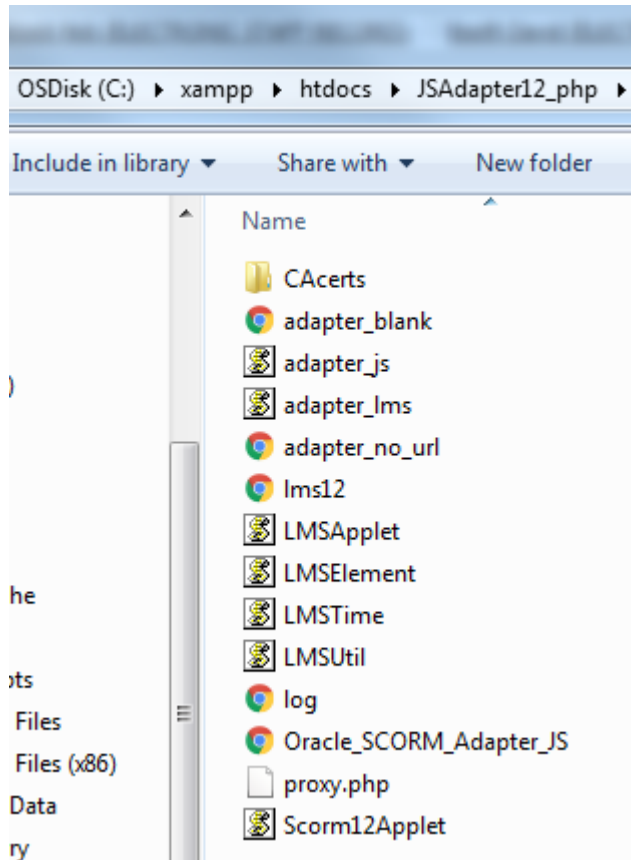
Following the instructions below, it is possible to set up a local server and use this for testing content on TPLY. To assist organisations there is a PHP version of the SCORM adapter registered on TPLY which can be used for this purpose.

The AMP stack used to set up the local server in this document was XAMPP <https://www.apachefriends.org/index.html> , but other stacks are available and there should not be much variation in set up.

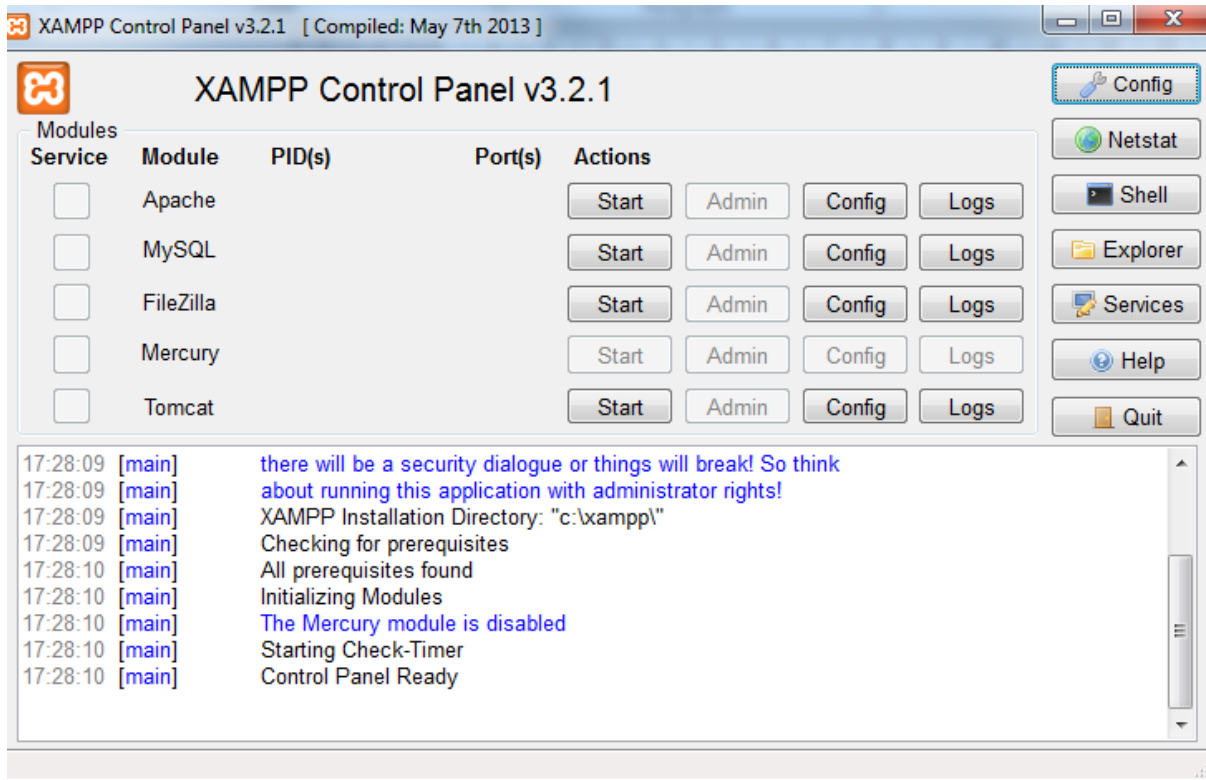
### 10.1 INSTALL LOCAL SERVER AND PHP SCORM ADAPTER

1. Download and install an AMP stack, using the default settings.
2. Download the [PHP SCORM adapter](#).
3. Unzip the SCORM adapter.
4. Copy and paste the SCORM adapter folder to the following location  
C:\xampp\htdocs.

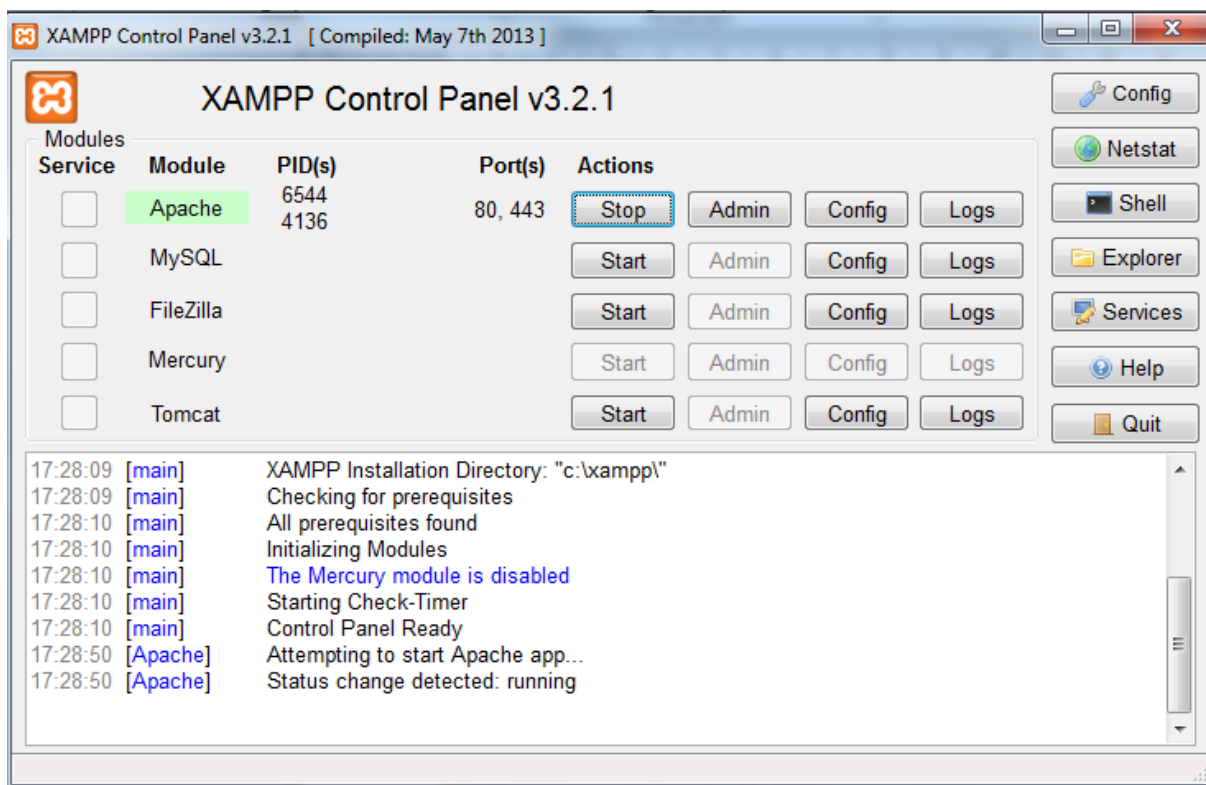
It should look similar to the screenshot below.



5. Start the XAMPP Control Panel



## 6. Start Apache



7. Confirm that you can load the SCORM adapter by entering the following URL into a browser

[http://127.0.0.1/JSAdapter12\\_php/Oracle\\_SCORM\\_Adapter\\_JS.html](http://127.0.0.1/JSAdapter12_php/Oracle_SCORM_Adapter_JS.html)

You should see the following in the browser window



# Oracle SCORM Adapter

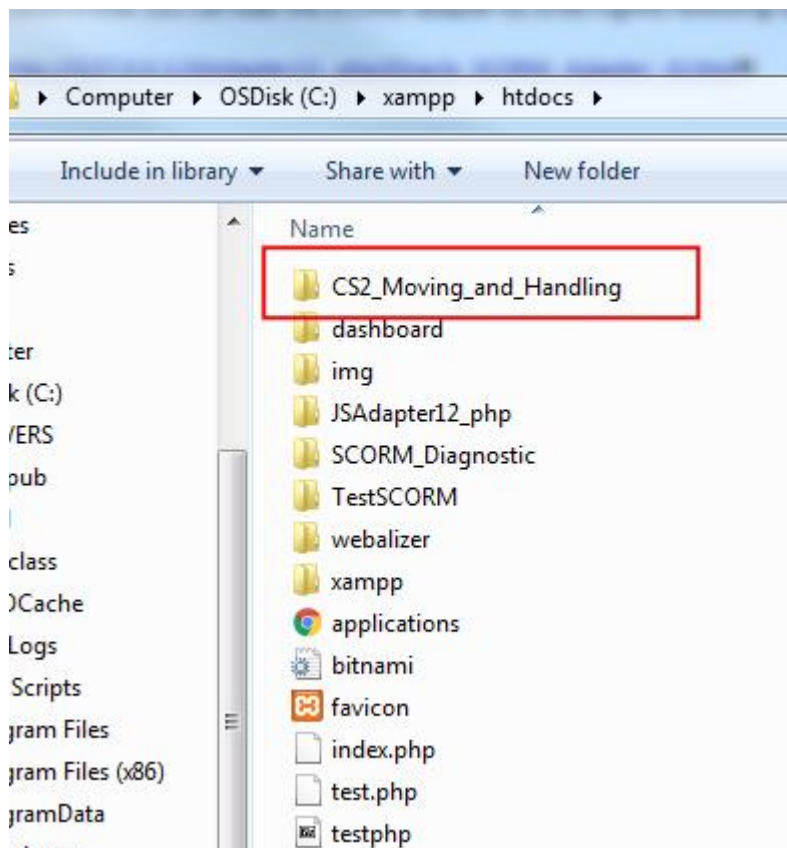
## No Content To Display

No starting URL was specified. You must add a query parameter called `starting_url`. For example, to show <http://www.oracle.com> in this frame, you would set the starting URL of the RCO to:

[http://yourhost/yourpath/adapter.html?starting\\_url=http://www.oracle.com](http://yourhost/yourpath/adapter.html?starting_url=http://www.oracle.com)

## 10.2 UPLOAD CONTENT TO LOCAL SERVER

1. Publish your content as you would if uploading to a web server.
2. Copy the content folder to the C:\xampp\htdocs folder as demonstrated in below screenshot



3. Confirm that the starting URL for the content opens in a browser. It should look similar to <https://127.0.0.1/coursecontentfolder/course.html>


Opening the file in a browser may generate some SCORM errors as you are not viewing the course within an LMS.

## 10.3 SET UP THE CONTENT IN TPLY

1. Create a course in TPLY in the usual way.
2. When creating the Learning Object ensure that you use the local URL e.g. [https://127.0.0.1/CS2\\_Moving\\_and\\_Handling/a001index.html](https://127.0.0.1/CS2_Moving_and_Handling/a001index.html)
3. Test that the content plays as expected.

SCORM calls can be viewed by clicking on the Log button.



Click the Home icon to exit the course correctly >>> 

SCORM Log - Internet Explorer

```
*** LMSSetValue("cmi.core.lesson_status", "incomplete")
Returned: "true"
*** LMSSetValue("cmi.suspend_data", "page15")
Returned: "true"
*** LMSCommit("")
Request:
cmi.suspend_data=page15
action=PutParam
oracle.apps.ota.private.scorm_version=SCORM 1.2
oracle.apps.ota.private.sessionId=suWvi-81oAhpHFOI7xqefg
key1=sPRVp17B6hY3LzCclq324A
key2=VDNFPTXwYld2wH9aJKDQhA
key3=ubc9-AGZGUTHb2ICMf9-kQ
Reply:
error_text=
error=0
Returned: "true"
*** LMSFinish("")
Request:
action=ExitAU
oracle.apps.ota.private.scorm_version=SCORM 1.2
oracle.apps.ota.private.sessionId=suWvi-81oAhpHFOI7xqefg
key1=sPRVp17B6hY3LzCclq324A
key2=VDNFPTXwYld2wH9aJKDQhA
key3=ubc9-AGZGUTHb2ICMf9-kQ
Reply:
error_text=
error=0
doAfterSendRequest action = ExitAU
Returned: "true"
```

Clear

Close

# 11 APPENDIX 4 - USING ARTICULATE PRODUCTS WITH ESR

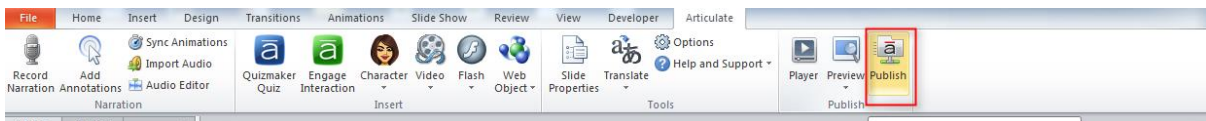
## 11.1 OVERVIEW

This section details the settings in Articulate Presenter that have been found to work correctly when content is played through ESR. This document refers to Articulate Presenter '13, however similar settings may work correctly in other versions of Articulate Presenter or Articulate Storyline.

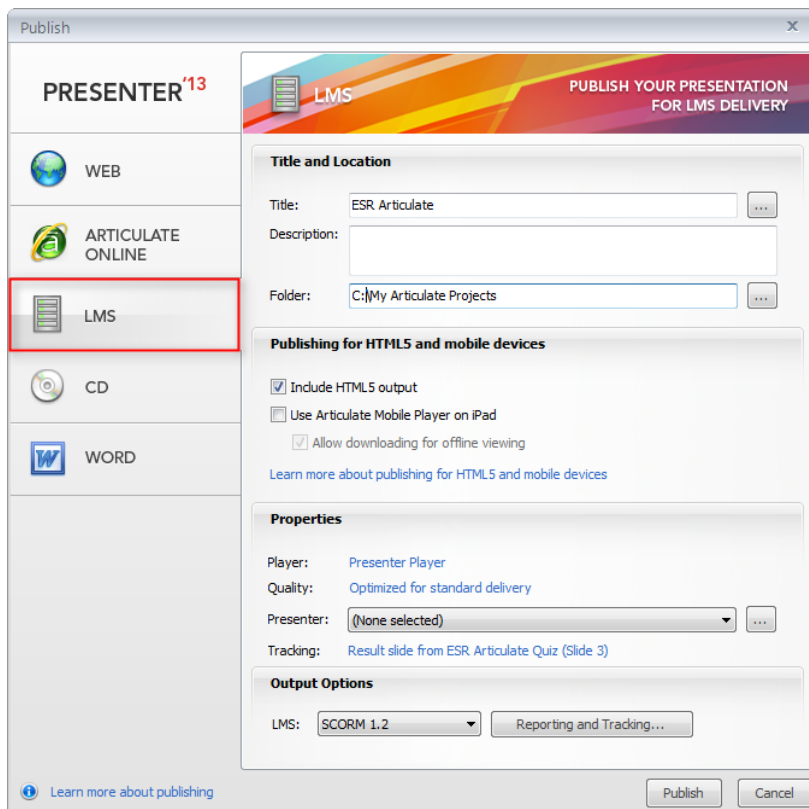
## 11.2 PUBLISH SETTINGS

When your course design is complete:

1. Select Publish from the ribbon

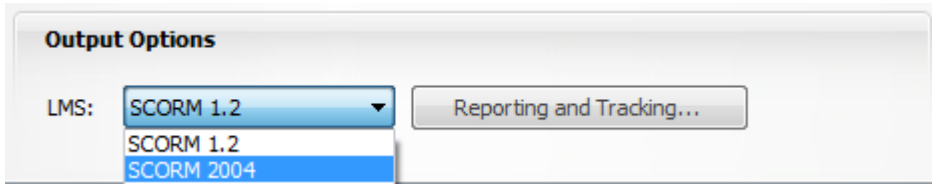


2. Select LMS



Output Options for publication are available at the bottom of the form

3. For ESR you can select SCORM 1.2



4. Select Reporting and Tracking to fine tune how the course communicates with the LMS.

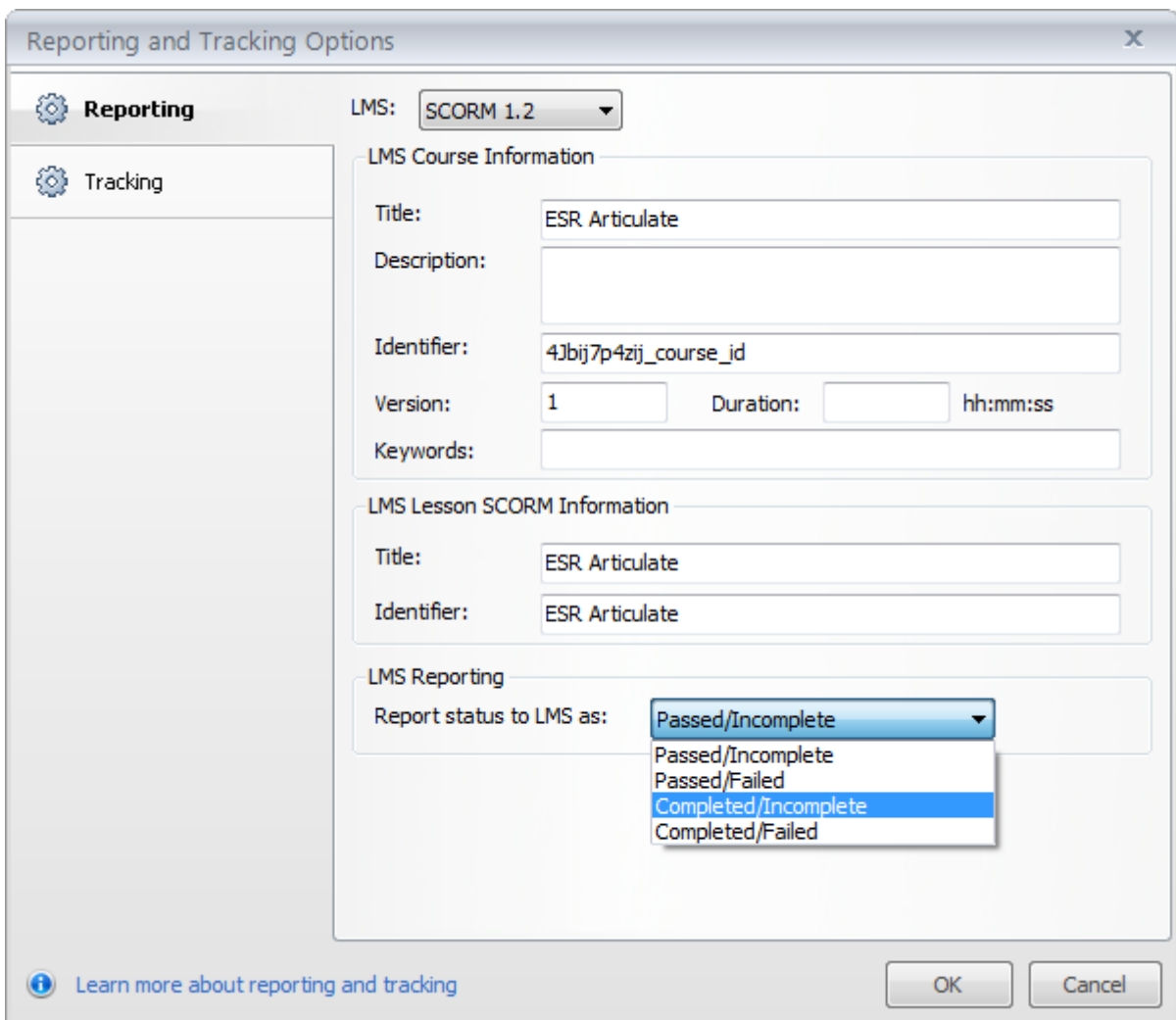
### 11.3 REPORTING

LMS Reporting will give be the status that a learner receives on their record.

- Passed/Incomplete
- Passed/Failed
- Completed/Incomplete
- Completed/Failed

Use Completed/Incomplete if your course does not have a quiz.

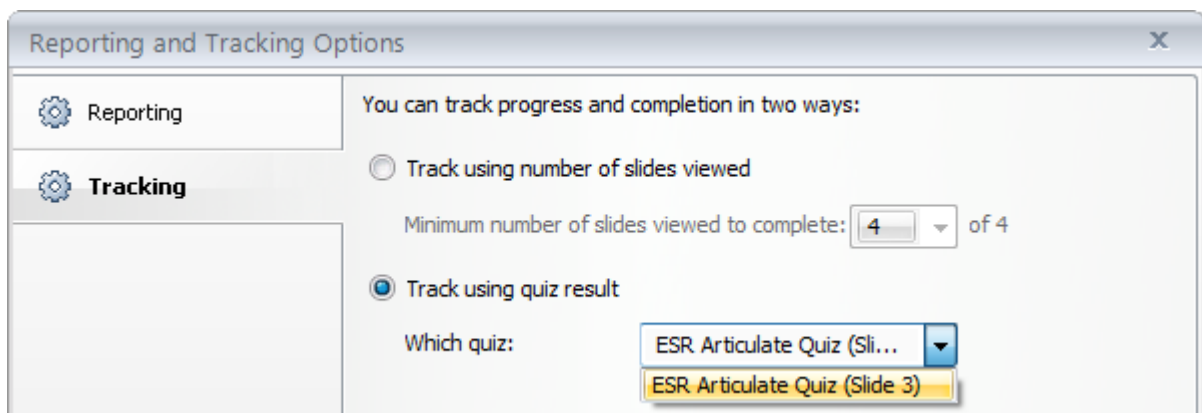
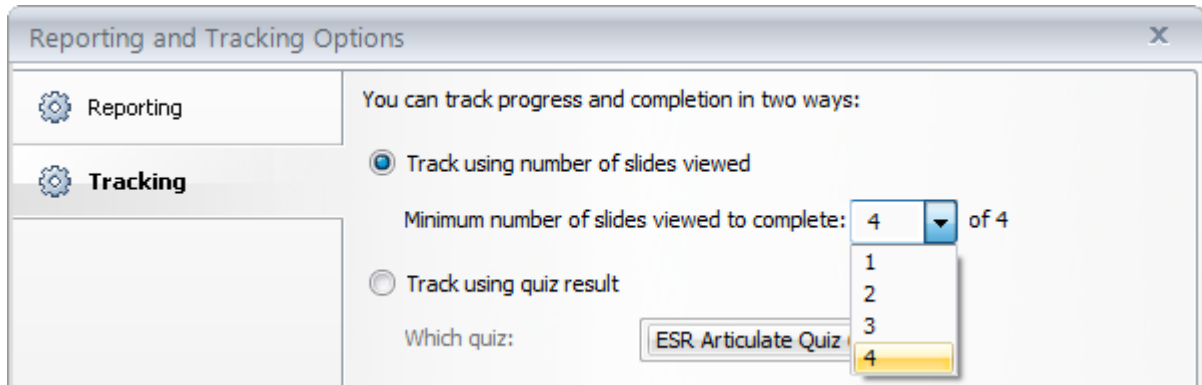
Use Passed/Failed if your course has a graded assessment.



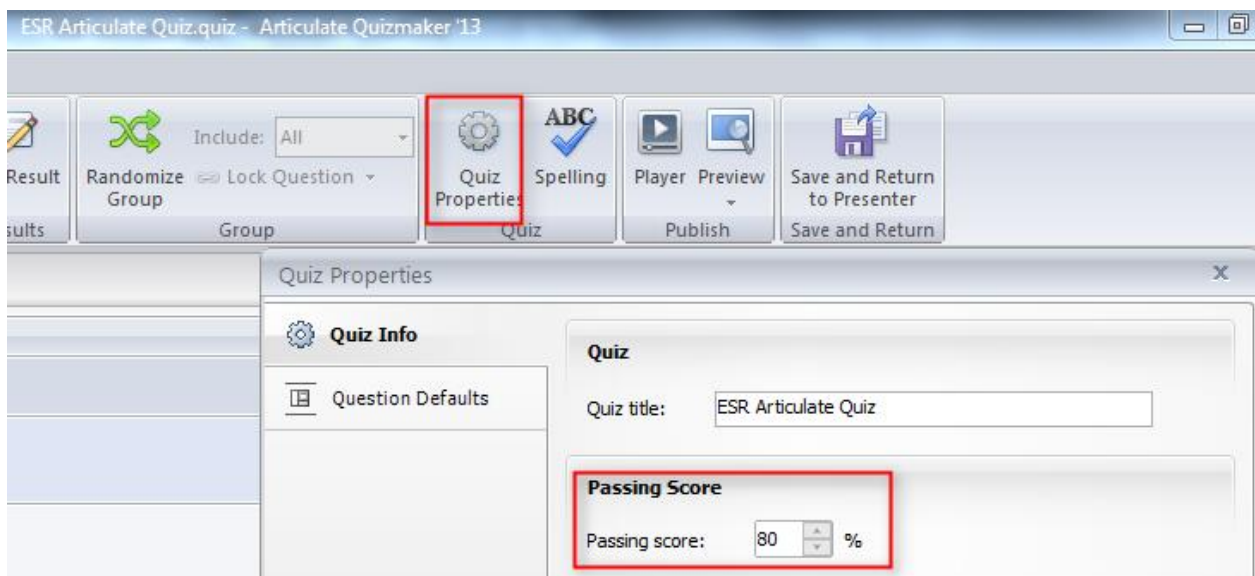
## 11.4 TRACKING

Tracking is used for changing the settings on how you wish to track progress and completion.

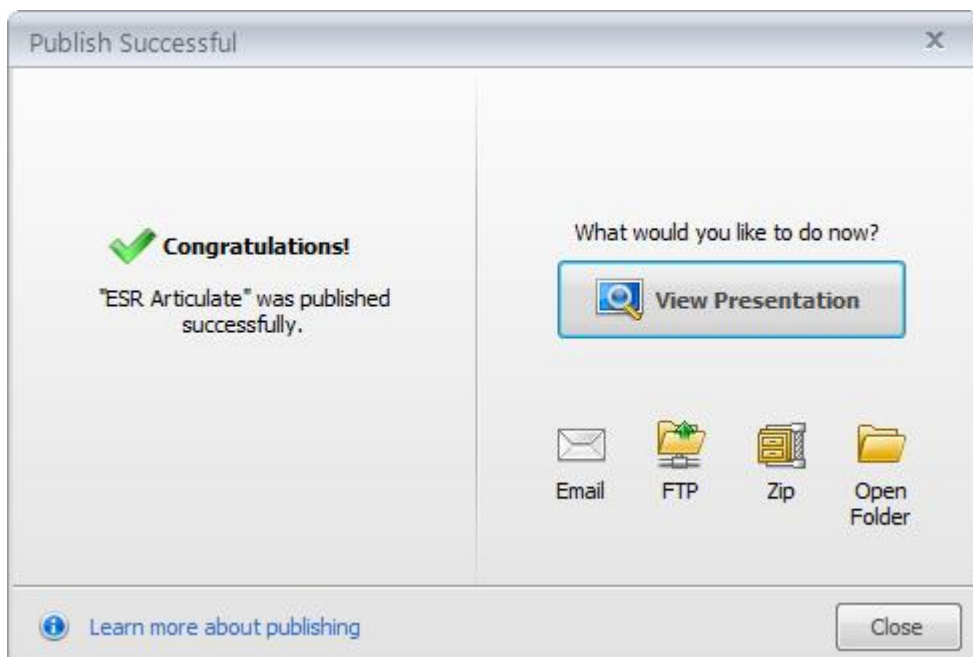
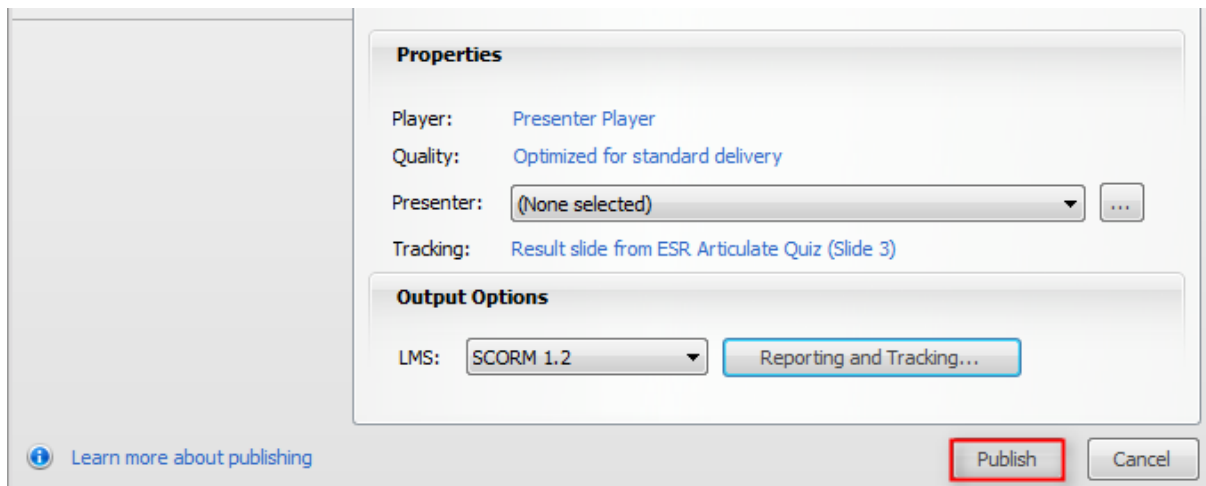
This can be based on the number of slides viewed or based on a quiz result within the course.



If you are using a quiz then the settings are set up in the Quiz properties.

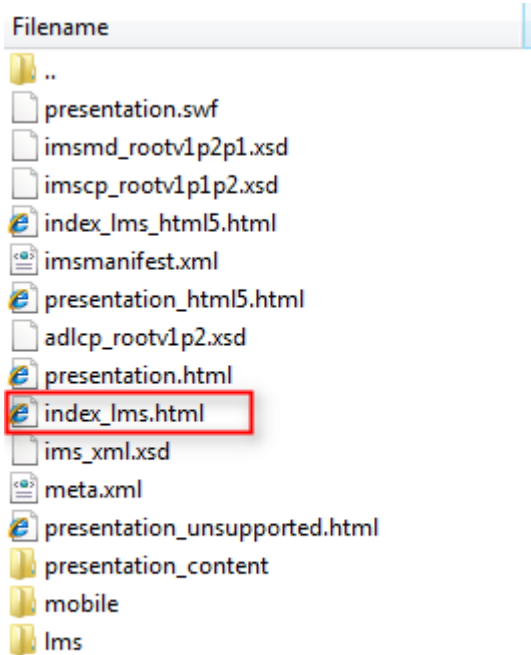


- When you are happy with the settings, click OK
- Click Publish

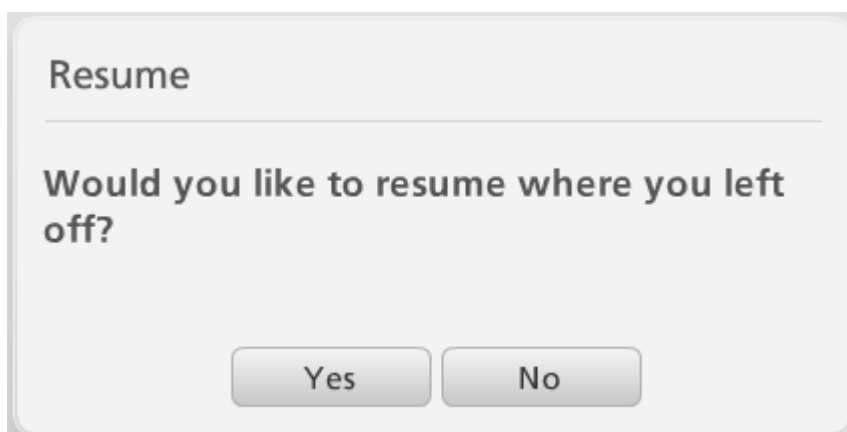


- Copy the unzipped files to your web server.

The file `index_lms.html` is the starting file for you course.  
E.g. in the Learning Object URL field in ESR you would enter:  
[https://www.myserver.com/elearning/course/index\\_lms.html](https://www.myserver.com/elearning/course/index_lms.html)



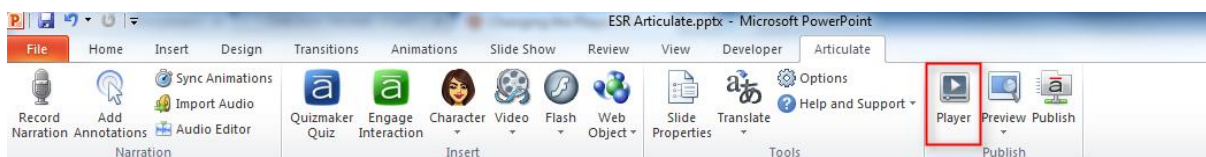
## 11.5 BOOKMARKING - PROMPT TO RESUME



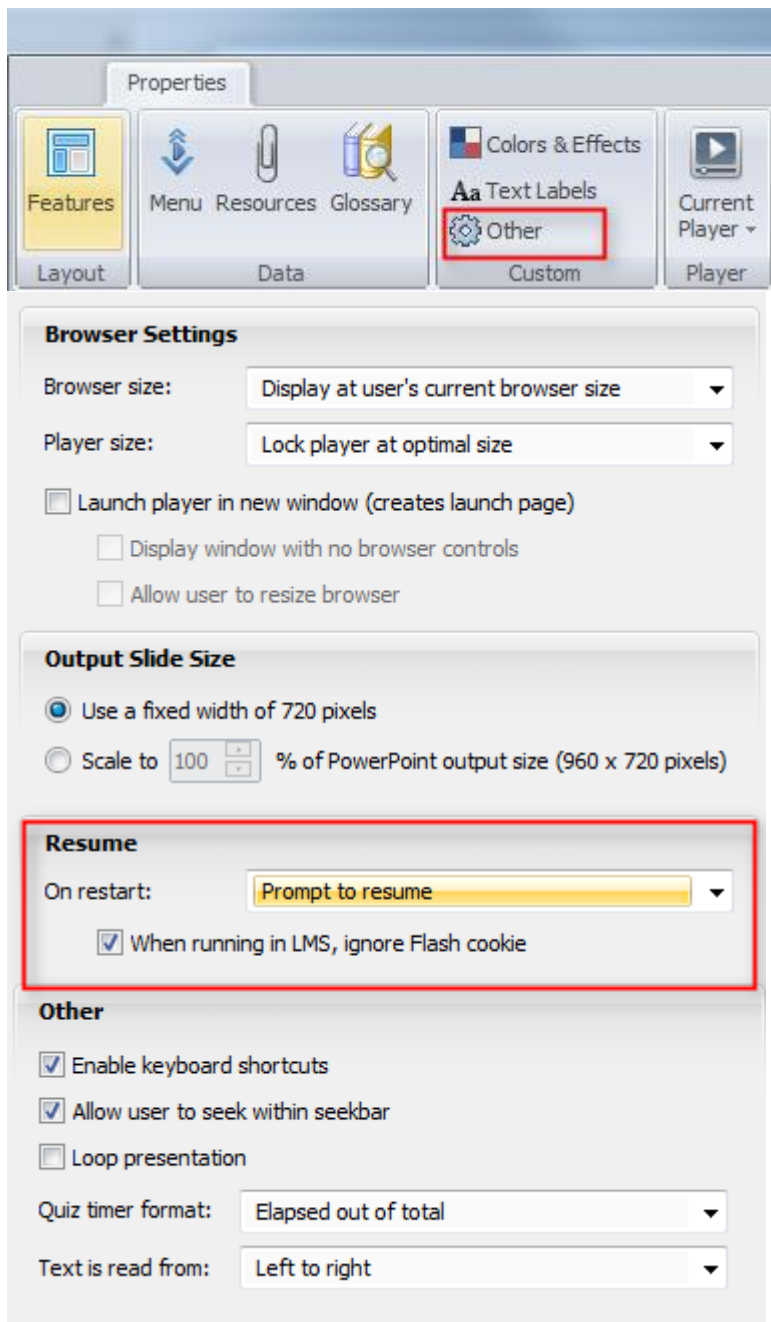
You can change the behaviour for how a course starts up if a learner exits the course and returns to it at a later time.

This is set in the Player options (note - this option is also available in the Player options for Engage Interactions and Quizmaker Quizzes).

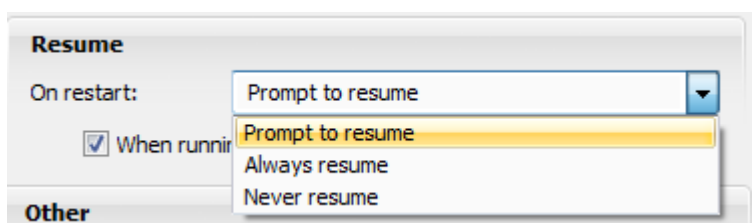
1. Select Player



2. Select Other



You can select from three options



1. Prompt to resume - the course will display the following prompt whenever a learner returns

Note - if the Learner selects No then it will reset all previous interactions with the course.

2. Always resume - the course will always resume from the last place that the learner reached in a course
3. Never resume - the course will always start from the beginning.



## 11.5.1 Exceeding SCORM Suspend Data Limits

If bookmarking is enabled (Option 1 or 2) then the 'suspend data' element stores the learner's location in the course.

```
*** LMSSetValue("cmi.suspend_data", "221c60107080903098100101300000r810101213h03kx300210612101000020040010") [Tue  
Returned: "true"  
*** LMSSetValue("cmi.suspend_data", "2d2e60f01070809030sr101101510h01011010131101510Q100K_player.5Yph00KhUR3.6ZID  
Returned: "true"
```

If courses are very large, or if Engage and Quiz interactions also create suspend data, then the Limit can be exceeded.

If this limit is exceeded then the course will always resume at the point where the limit was reached.

You will see a message in the console log similar to the following

```
LMSSetValue (" cmi.suspend_data...)
```

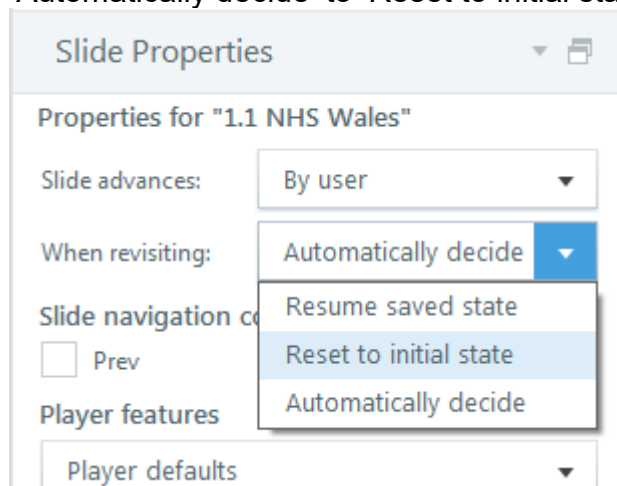
```
LMS Error: 405 - Incorrect data type
```

## 11.5.2 Solutions

If you have a large course that does exceed suspend data limits, here are some suggestions for correcting it:

- Disable the resume feature in your content: Presenter, Quizmaker, Engage.
- Reduce the number of slides until the resume feature works as expected. The limit will vary, depending on a variety of factors. You'll need to test your content in your TPLY to verify.

In Articulate Storyline under Slide Properties, change the 'When revisiting' value from 'Automatically decide' to 'Reset to initial state'.



---

## 12 APPENDIX 5 - USING ADOBE CAPTIVATE WITH ESR

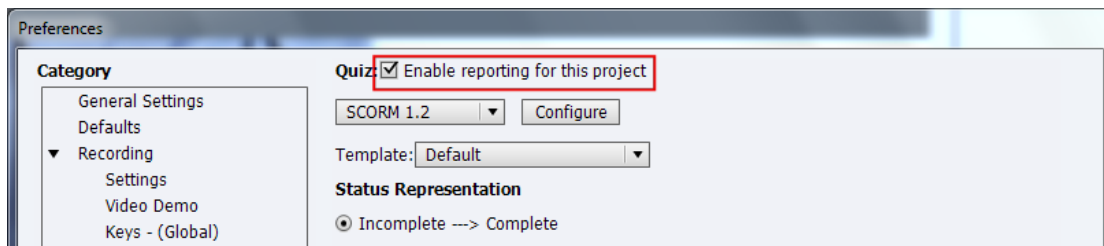
---

### 12.1 OVERVIEW

This document details the settings in Adobe Captivate that have been found to work correctly when content is played through ESR. This document refers to Adobe Captivate 6, however similar settings may work correctly in newer versions although the menu path may be slightly different.

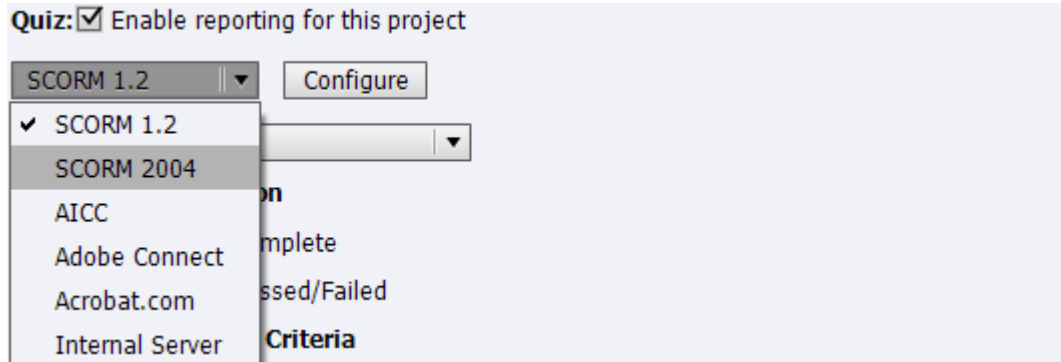
### 12.2 PUBLISH SETTINGS

To enable SCORM reporting in a Captivate session, the 'Enable reporting in this project' option must be checked as detailed in the below example.



### 12.3 SCORM VERSION

Select SCORM 1.2



### 12.4 MANIFEST

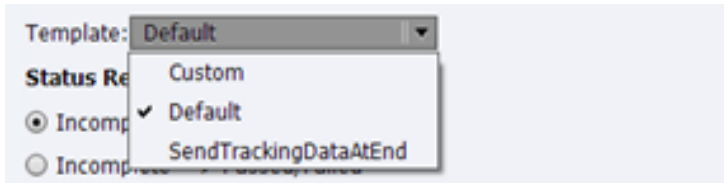
There is no need to select Configure Manifest files as these are not used in ESR. (These are normally used in systems to create learning objects, however this is done by an administrator in ESR).

## 12.5 TEMPLATE

The template defines how the content will send SCORM updates to the LMS. The Default template sends interaction details about the content to the LMS at every point during the course.

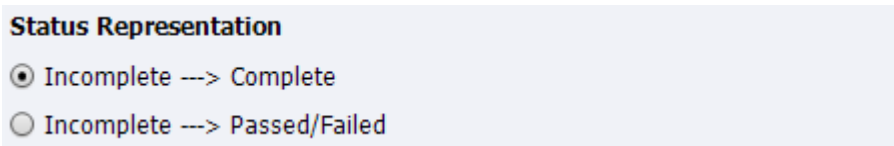
The SendTrackingDataAtEnd template only sends interaction details when the user exits a course.

Both templates will work correctly with ESR, however if the content is generating LMS errors in your testing (visible in the log file) then it is recommended that you use the SendTrackingDataAtEnd template.



## 12.6 STATUS

This setting controls the statuses that are sent back to the LMS. This will usually be Incomplete/Complete if a course does not have an assessment, or Passed/Failed when it does.



## 12.7 SUCCESS/COMPLETION CRITERIA

The settings here specify when the learner Status will be updated to Complete or Passed/Failed

**User Access** - Sets Status to completed/passed as soon as the learner views the content.

This setting would not usually be used with SCORM content in ESR as the same outcome could be achieved in ESR by setting the Learning Object tracking type to Automatic.

### Slide views and / or quiz

The learner Status will be updated based on either Slide Views achieved or a Quiz passed or a combination of both.

In most cases, if your course does not have a quiz then you would update the learner status based on slide views. If your course has a quiz then the learner status would be updated based on the quiz result.

**Success/Completion Criteria**

User Access

Slide views and /or quiz

Slide Views [  100%  0 Slide(s) ]

Quiz [ Quiz is Passed ]

**Data To Report**

Quiz Score [  Percentage  Points ]

**Slide Views** - Updates Status once user has completed enough slides (either a specified percentage or a set number of slides). If you require that the learner must view all slides before their status is updated to completed then set this to 100%.

Note - care must be used if you use this setting and your course uses branching. This is covered in further detail in the section Custom Completion Criteria.

**Quiz** - If you are giving the learner unlimited attempts to pass the quiz then select 'Quiz is Passed'.

If there is a limit to the number of attempts then select 'Quiz is passed or the quiz attempt limit is reached'.

The settings for your quiz are set in the 'Pass or Fail' section

Quiz [ Quiz is Passed ]

**Data To Report**

Quiz Score [  Percentage  Points ]

Interaction Data

**Data to Report** - Percentage or Points (raw score), Percentage is recommended  
Interaction Data should be unticked as this is not recorded in ESR.

**Data To Report**

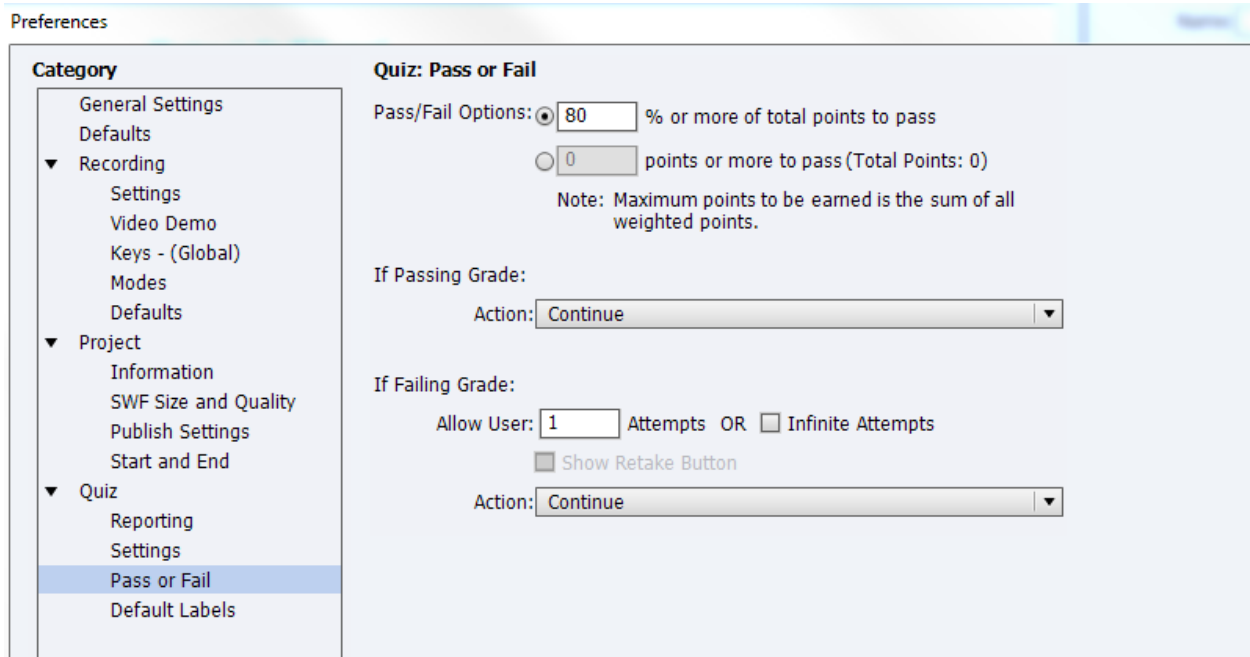
Quiz Score [  Percentage  Points ]

Interaction Data

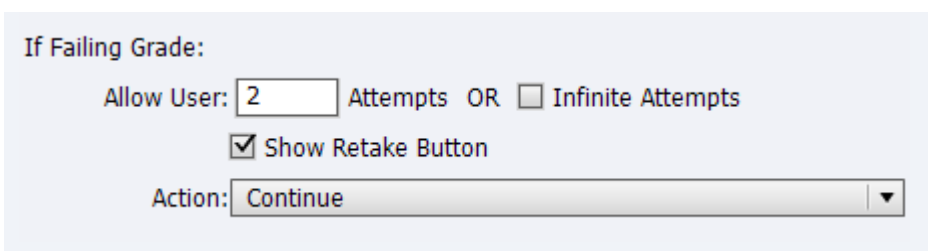
### Pass or Fail options.

Either set the passing score in Captivate or on the Learning Object in ESR. Do not use both/

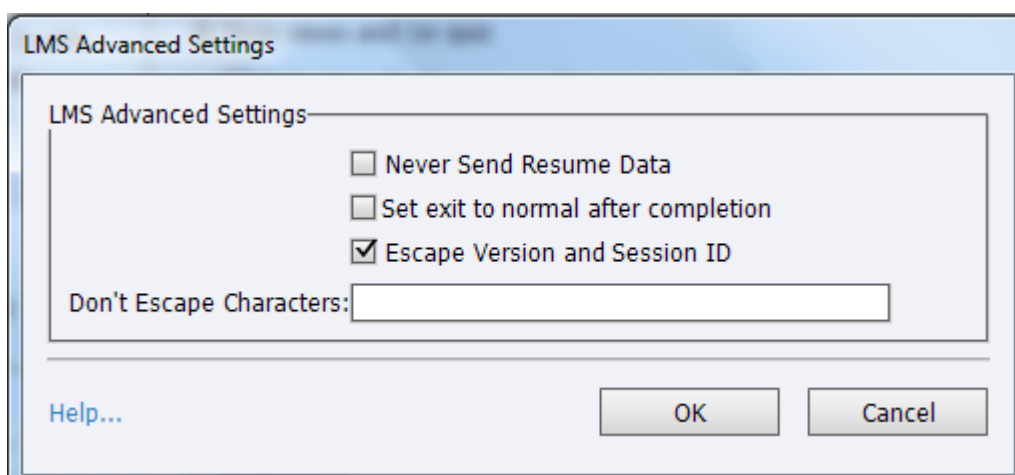
**Pass/Fail Options** - It is recommended that you use a percentage score for your pass mark.



If the number of attempts at the quiz is greater than 1 or the Infinite Attempts check box is ticked then it is recommended that the Show Retake Button check box is ticked. This button will take the learner to the beginning of the quiz.



## 12.8 LMS ADVANCED SETTINGS



### Never Send Resume Data

Check this box to turn off bookmarking i.e. the content will not remember where the user last played up to

### Set exit to normal after completion

Tick this box if you want learners to be able to view a course from the beginning once it has been successfully completed. This is not necessary if your course is to be used as part of a certification.

Ticking this box does not mean that a learner will update their course completion date if they view the course at a later date.

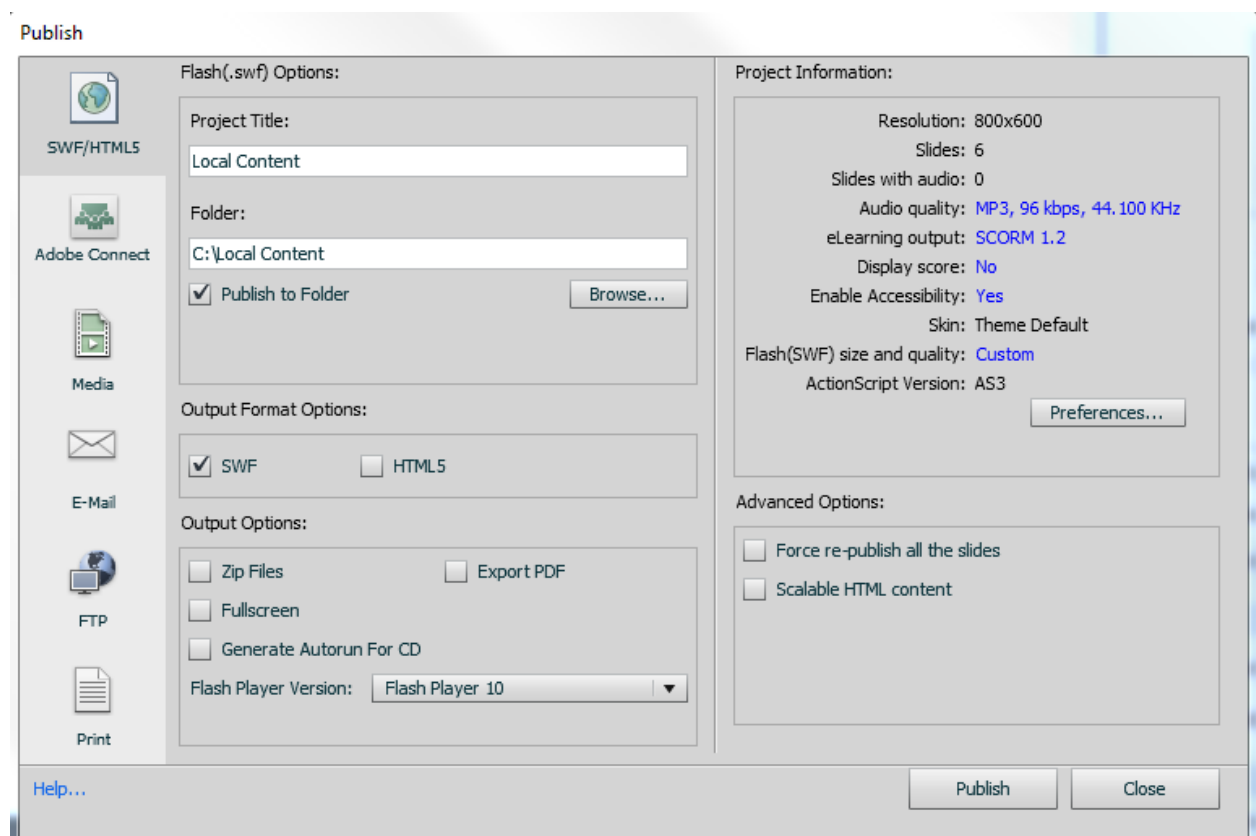
### Escape Version and Session ID

This setting is not used in ESR.

## 12.9 PUBLISH COURSE

Once you have set up your Publish settings

- Select File - Publish
- Ensure that the eLearning output in the Project Information states SCORM 1.2.
- Enter your Project Title and the location where you wish to Publish.
- Select Publish to Folder and ensure that Zip Files is unchecked
- You may choose HTML 5 as well as SWF (Flash) in the Output Format Options, this will ensure that you content can be played on devices other than PCs.
- If you check HTML 5, you can check Scalable HTML content in the Advanced Options so that the content will scale to the size of the screen that is being used to view the content.



## 12.10 CUSTOM COMPLETION CRITERIA

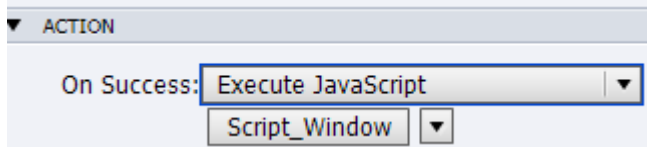
If you are using Slide Views as Completion Criteria and you set Slides viewed to 100%, if your course has any branching then a user will not be able to complete the course as they will not view all the slides.

You can overcome this by adding a button to a course and adding code to the button to mark the course as complete.

1. Add a button to a page in your course (usually the last slide, but it can be added anywhere)

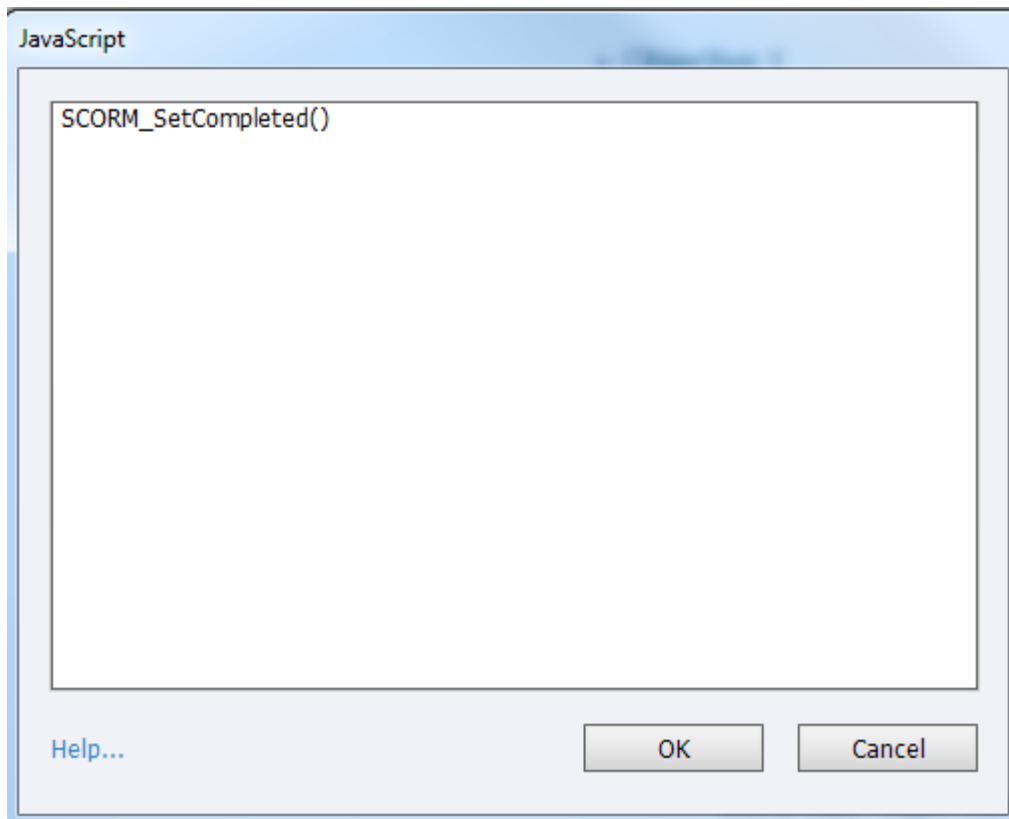


2. In the Action section - select Execute JavaScript from the On Success drop-down



3. Click Script Window
4. Enter SCORM\_SetCompleted() in the JavaScript window

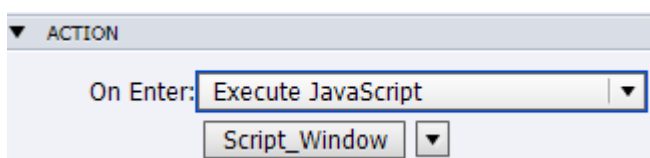
This is the function that is already built into Captivate to change the course status to complete and would usually be triggered by the Success/Completion Criteria.



5. Click OK.
6. Save changes and publish your course.

You can also achieve the same result by adding to the JavaScript to the Action Properties for a Slide.

If the same code is added to the On Enter action, when a user navigates to the slide, the course will automatically be marked as complete.



---

## 13 APPENDIX 6 - USING LECTORA WITH ESR

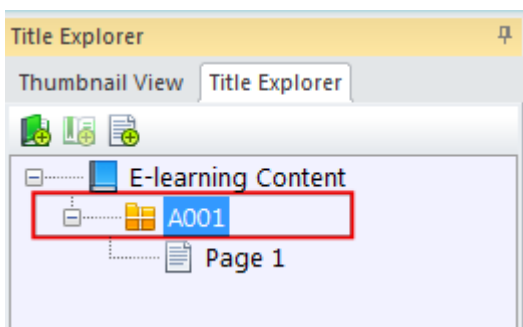
---

### 13.1 OVERVIEW

This section details the settings in Lectora Publisher that have been found to work correctly when content is played through ESR. Normally SCORM standards mean that content can be played in any LMS however Some versions of Lectora publish content in a way that does not work correctly in ESR due to security rules present in all modern browsers. This document refers to Lectora Publisher version 11; however similar settings may work correctly in other versions of Lectora Publisher or Lectora Inspire.

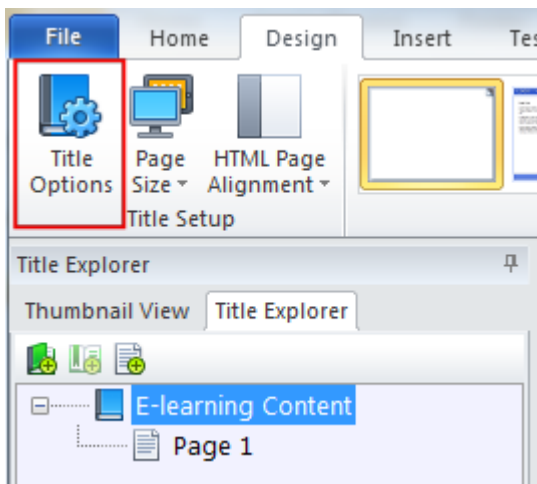
### 13.2 INITIAL SET UP

A course created in Lectora must contain an Assignable Unit, similar to that shown in the screenshot below, in order to be SCORM compliant.



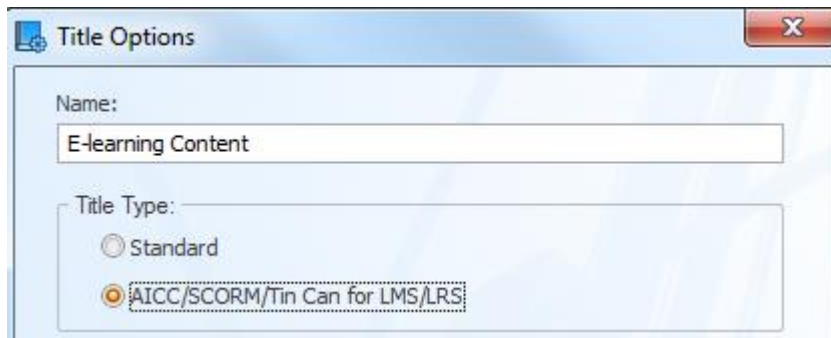
If your course does not contain an Assignable Unit then follow the steps below, if it does then move to the next section - [Add Required Actions](#).

#### 1) Select Design - Title Options



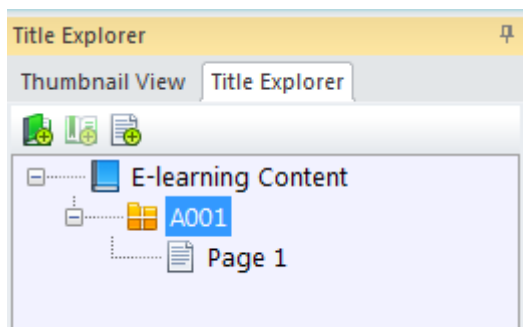


## 2) Change the Title Type to AICC/SCORM/Tin Can for LMS/LRS



## 3) Click OK

Your Title Explorer will now look similar to the screen shot below.



## 13.3 ADD REQUIRED ACTIONS

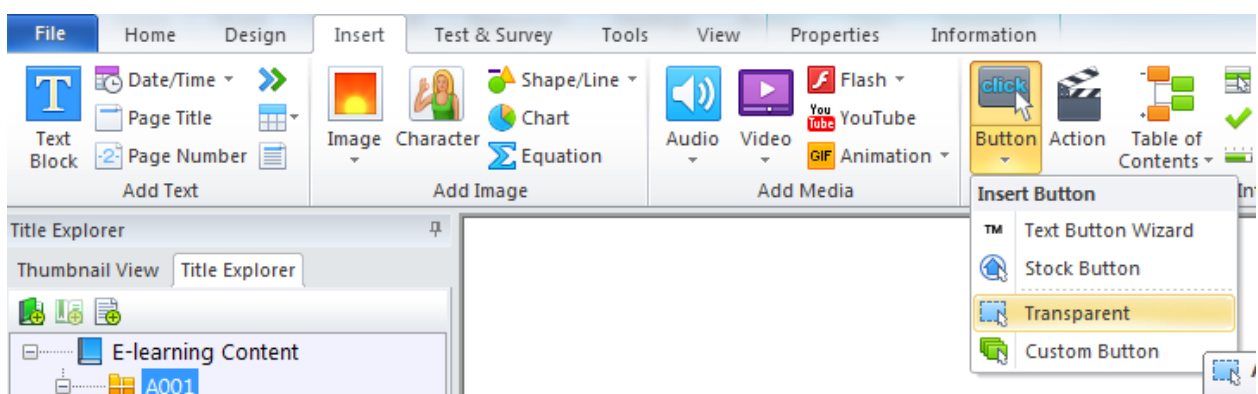
In Lectora, a SCORM compliant course must have an 'Exit Title' action and an action that modifies either/or both of the variables AICC\_Lesson\_Status or AICC\_Score.

### Add an exit button

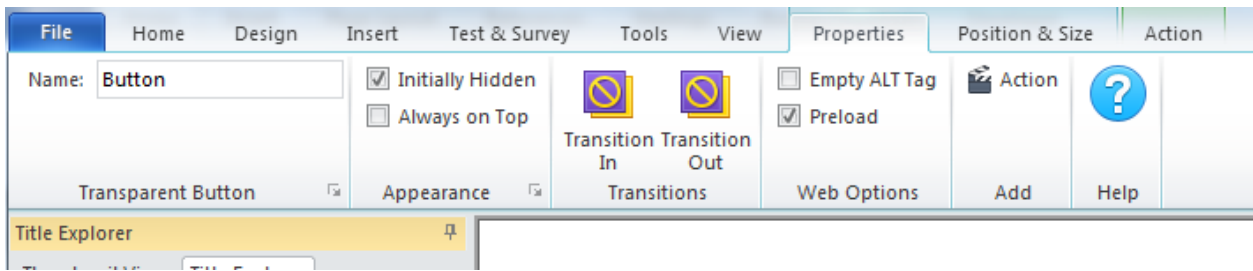
ESR already has an exit button to leave a course, so although we must add the action to the Lectora course we do not want the learner to click it.

This can be achieved by adding the Exit action to an invisible button.

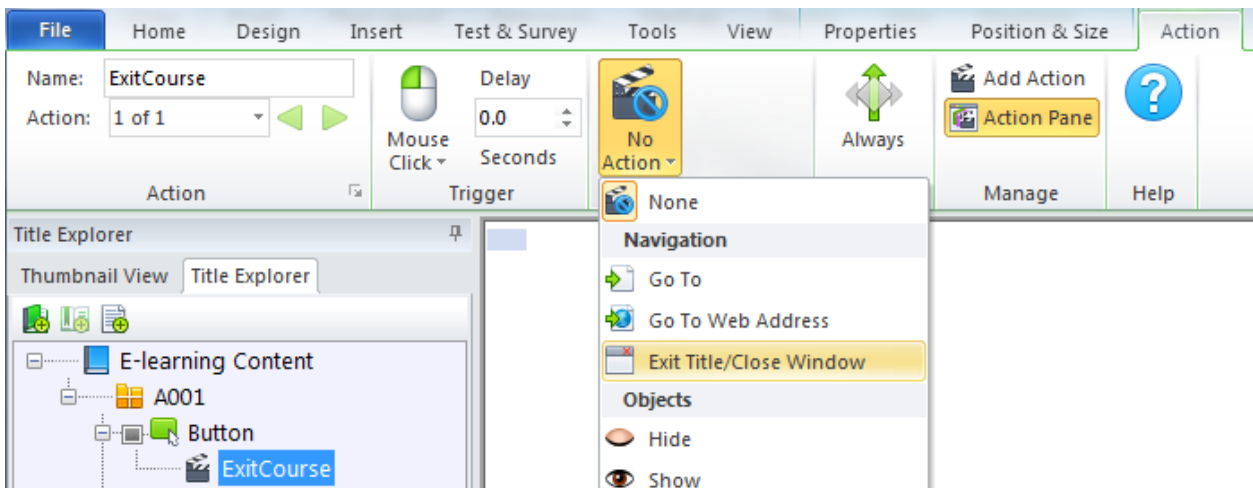
#### 1. Add a Transparent button to A001



2. Ensure the button is initially hidden



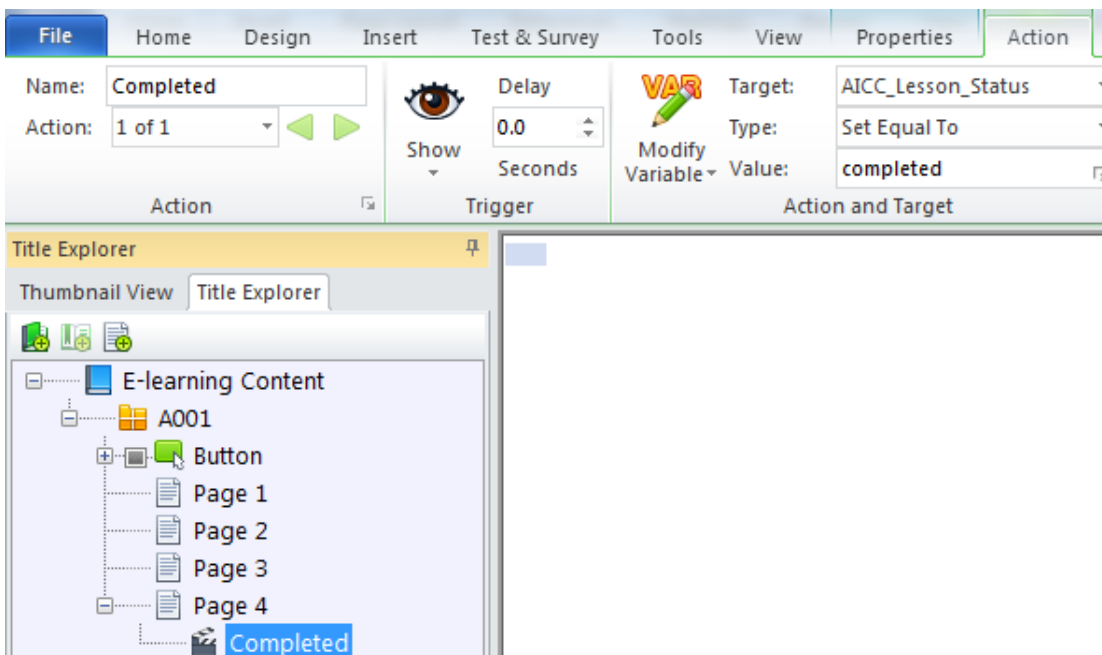
3. Add the Action Exit Title/Close Window to the button.



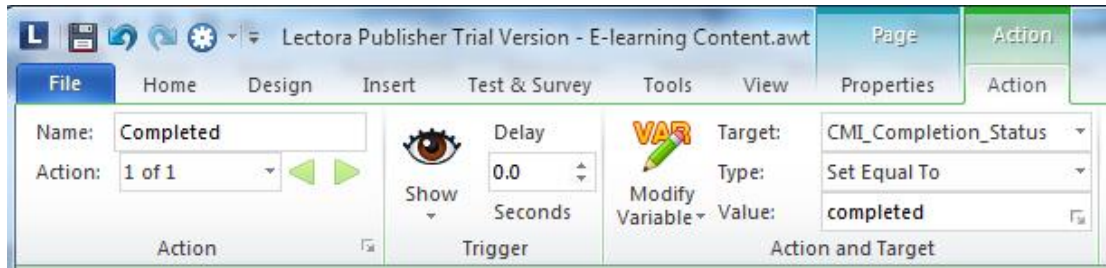
### 13.4 SETTINGS WITH NO ASSESSMENT

If your course does not have an assessment then you can add an action to your course that sets the course to completed on the last page of the course.

1. Select Modify Variable for action type.
2. Select the target variable of AICC\_Lesson\_Status
3. Set Equal To 'completed' (all lower case)



If your course is SCORM 2004 compliant then you will also have to set a value for CMI\_Completion\_Status.



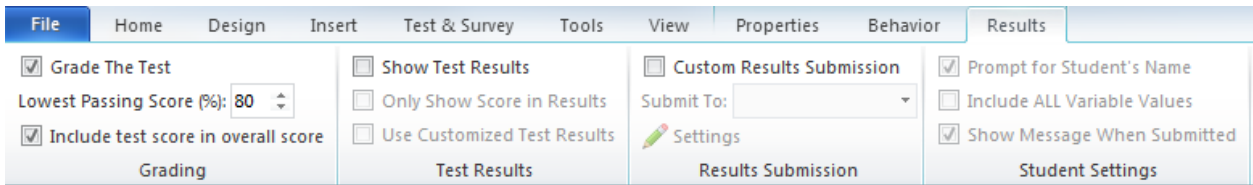
## 13.5 SETTINGS WITH AN ASSESSMENT

To start, your course must have at least one test chapter. This will ensure that the AICC\_Score variable is given a value on completion of the test.

1. Uncheck 'Include test score in overall score' if do not want the test to contribute towards the final score.

In this example - we only have one test in the course, the result of this test will be the value assigned to the variable, AICC\_Score.

If we had more than one test then the value assigned to AICC\_Score would be the average of all the test scores included in the overall score.



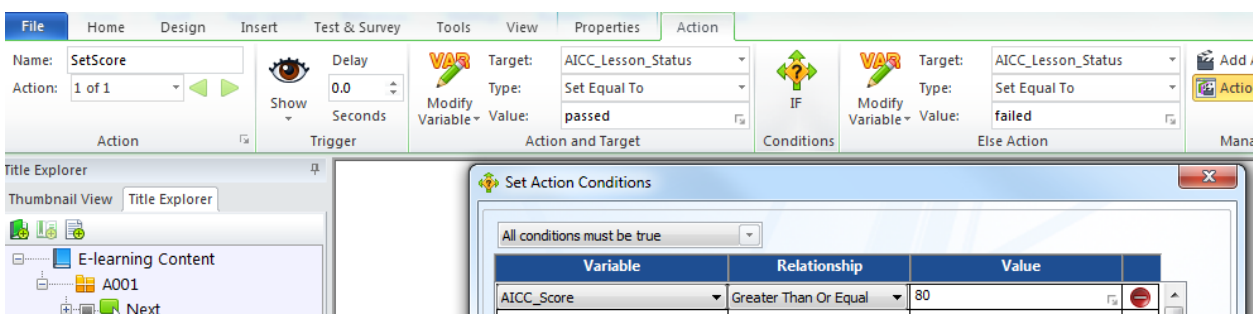
2. Create an action to Submit/Process the test (usually on the last page of the test).



### Update the Lesson Status

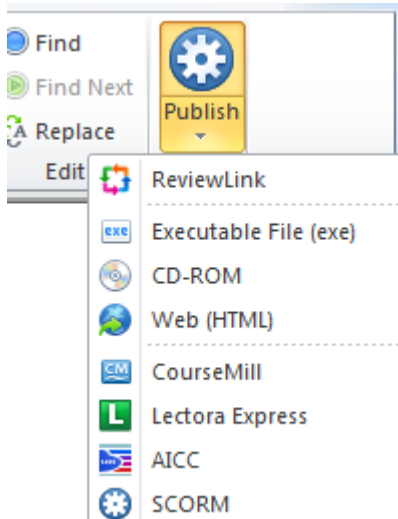
3. Create an action to update the lesson status based on the result of the test, usually on the last page in your course.

Here we are changing the course status to 'Passed' if the AICC\_Score is greater than 80. If the score is less than 80 then the lesson status will be set to 'Failed'



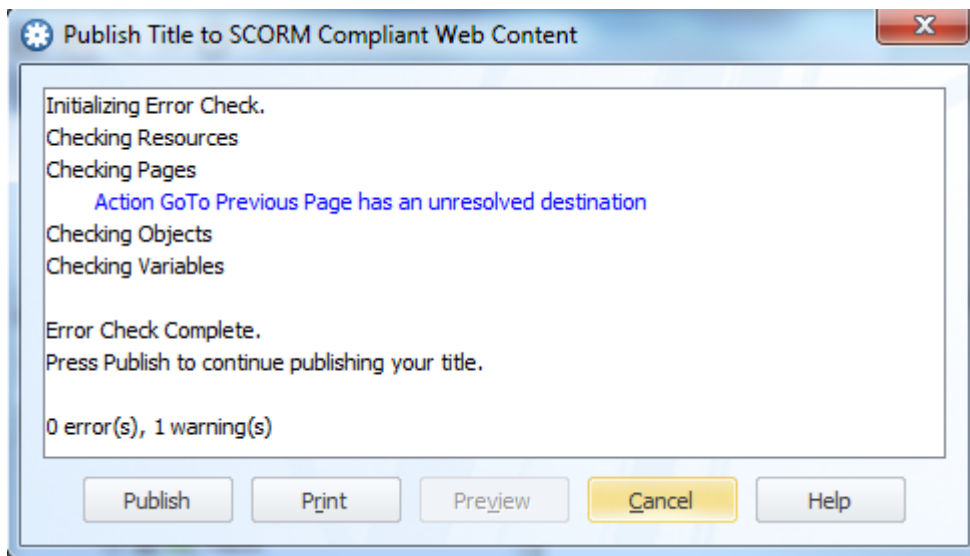
## 13.6 PUBLISH YOUR COURSE

1. Select Publish -SCORM

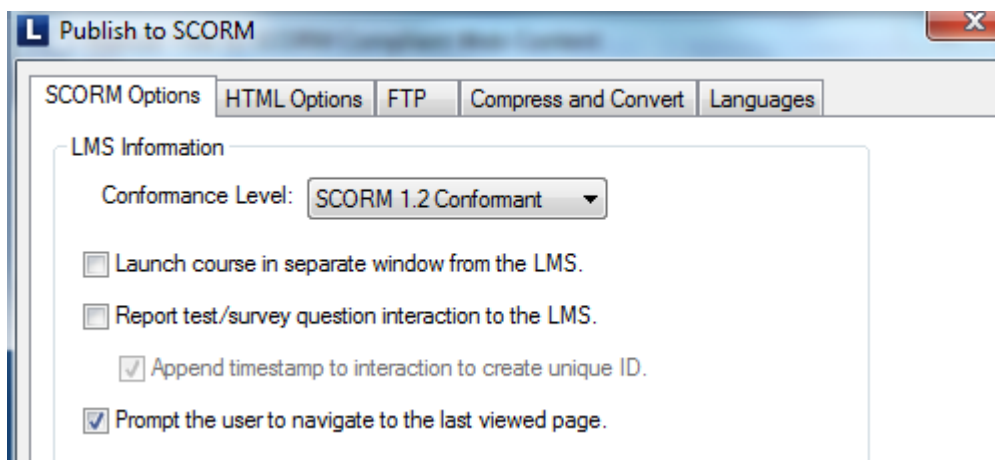


A dialogue box will be displayed.  
Errors will be shown in red and must be corrected.  
Warnings will be shown in blue and can be corrected or ignored.

2. Click Publish



3. Select SCORM 1.2 Conformant from the Conformance Level drop-down.

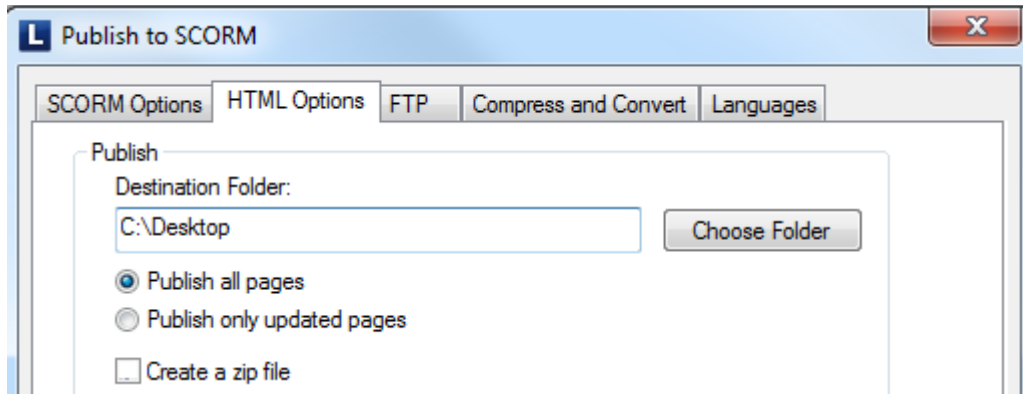


'Launch course in separate window from LMS' should never be ticked.

'Report test/survey question interaction to the LMS' should not be ticked as these calls are not supported by SCORM 1.2 in ESR. (These calls are supported by SCORM 2004 but would not be stored in ESR).

Uncheck the 'Prompt the user to navigate .to the last viewed page' check box if you do not wish to use bookmarking. This option is checked by default.

4. Select HTML Options to choose the Destination Folder
5. Untick the create zip file as e-Learning content used with ESR is copied directly to a server.



6. Click OK

## 13.7 UPDATES TO LECTORA FILES

There are configurations in apiwrapper11.js file that mean that courses may not load correctly in ESR when using Internet Explorer 11, Firefox or Chrome.

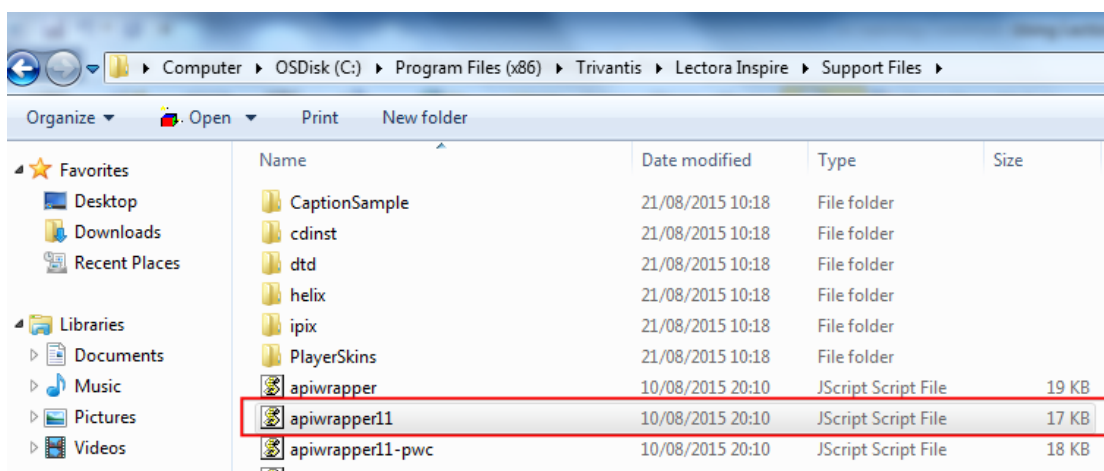
Below is a workaround that will enable the courses to play correctly. This is only required where there are references to the top window.

The changes require editing of the above file, the screenshots below were produced using Notepad++, but can be made in any text editing software such as Notepad.

Navigate to the following directory on the computer where Lectora is installed.

C:\Program Files\Trivantis\Lectora Inspire\Support Files

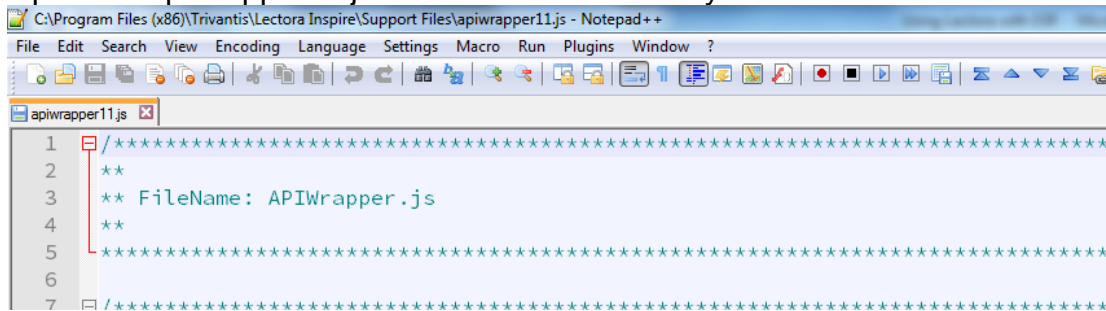
Find the file apiwrapper11.js



Make a copy of the file and rename, it is good practice to make copies of any source program file that you make changes to.

apiwrapper11 - copy	10/08/2015 20:10	JScript Script File	17 KB
apiwrapper11	10/08/2015 20:10	JScript Script File	17 KB

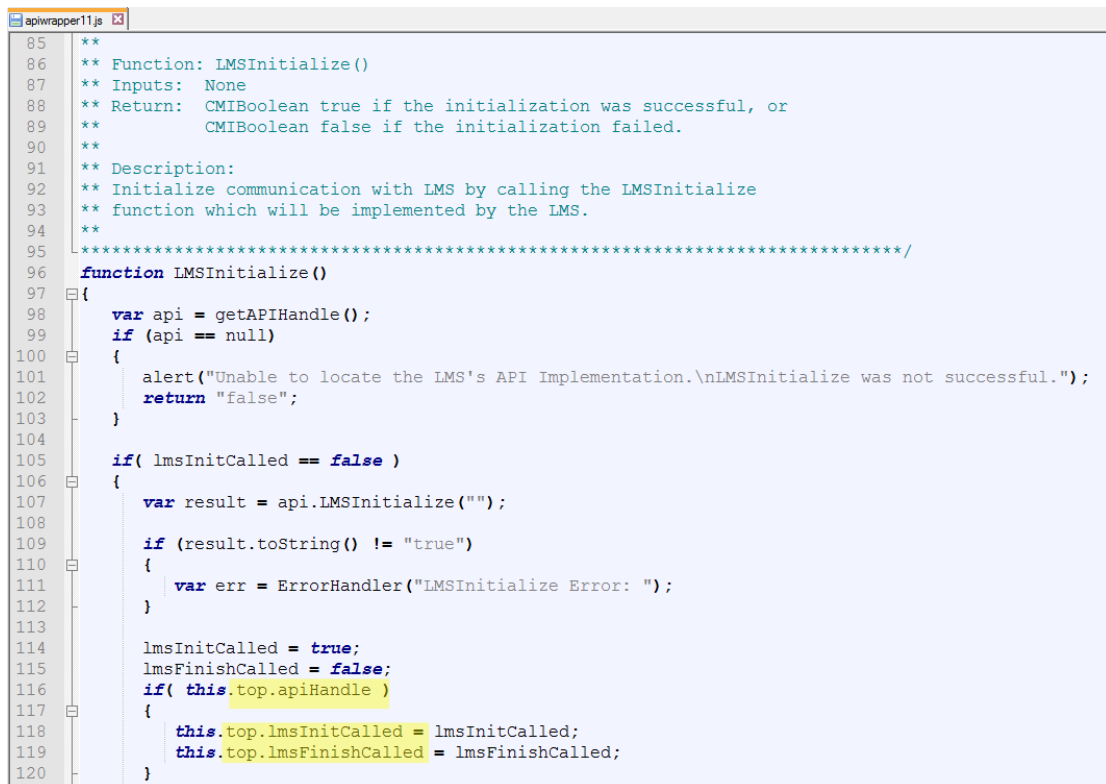
Open the apiwrapper11.js file in the text editor of your choice.



```
1  /*****
2  **
3  **  FileName: APIWrapper.js
4  **
5  *****/
6
7  /*****
```

Navigate to the LMSInitialize() section (Starts at line 84)

On lines 116, 118 and 119 change the replace “top” with “parent”



```
85  **
86  **  Function: LMSInitialize()
87  **  Inputs:  None
88  **  Return:  CMIBoolean true if the initialization was successful, or
89  **           CMIBoolean false if the initialization failed.
90  **
91  **  Description:
92  **  Initialize communication with LMS by calling the LMSInitialize
93  **  function which will be implemented by the LMS.
94  **
95  *****/
96  function LMSInitialize()
97  {
98      var api = getAPIHandle();
99      if (api == null)
100     {
101         alert("Unable to locate the LMS's API Implementation.\nLMSInitialize was not successful.");
102         return "false";
103     }
104
105     if( lmsInitCalled == false )
106     {
107         var result = api.LMSInitialize("");
108
109         if (result.toString() != "true")
110         {
111             var err = ErrorHandler("LMSInitialize Error: ");
112         }
113
114         lmsInitCalled = true;
115         lmsFinishCalled = false;
116         if( this.parent.apiHandle )
117         {
118             this.parent.lmsInitCalled = lmsInitCalled;
119             this.parent.lmsFinishCalled = lmsFinishCalled;
120         }
121     }
122 }
```

Becomes

```

85  **
86  ** Function: LMSInitialize()
87  ** Inputs:  None
88  ** Return:  CMIBoolean true if the initialization was successful, or
89  **          CMIBoolean false if the initialization failed.
90  **
91  ** Description:
92  ** Initialize communication with LMS by calling the LMSInitialize
93  ** function which will be implemented by the LMS.
94  **
95  /*****
96  function LMSInitialize()
97  {
98      var api = getAPIHandle();
99      if (api == null)
100     {
101         alert("Unable to locate the LMS's API Implementation.\nLMSInitialize was not successful.");
102         return "false";
103     }
104
105     if( lmsInitCalled == false )
106     {
107         var result = api.LMSInitialize("");
108
109         if (result.toString() != "true")
110         {
111             var err = ErrorHandler("LMSInitialize Error: ");
112         }
113
114         lmsInitCalled = true;
115         lmsFinishCalled = false;
116         if( this.parent.apiHandle ) //changed top to parent
117         {
118             this.parent.lmsInitCalled = lmsInitCalled; //changed top to parent
119             this.parent.lmsFinishCalled = lmsFinishCalled; //changed top to parent

```

Note: A comment has been added to the code so that we can identify where the change has been made.

Navigate to the `LMSFinish()` section (Starts at line 132)

On lines 160, 162 and 163 replace “top” with “parent”

```

132 /*****
133 **
134 ** Function LMSFinish()
135 ** Inputs:  None
136 ** Return:  CMIBoolean true if successful
137 **          CMIBoolean false if failed.
138 **
139 ** Description:
140 ** Close communication with LMS by calling the LMSFinish
141 ** function which will be implemented by the LMS
142 **
143  /*****
144  function LMSFinish()
145  {
146      var result = "false";
147      var api = getAPIHandle();
148      if (api == null)
149      {
150          alert("Unable to locate the LMS's API Implementation.\nLMSFinish was not successful.");
151          return "false";
152      }
153      else
154      {
155          // call the LMSFinish function that should be implemented by the API
156          var finishCalled = lmsFinishCalled;
157
158          lmsFinishCalled = true;
159          lmsInitCalled = false;
160          if( this.top.apiHandle )
161          {
162              this.top.lmsInitCalled = lmsInitCalled;
163              this.top.lmsFinishCalled = lmsFinishCalled;
164          }

```

Becomes



```

132 /*****
133 **
134 ** Function LMSFinish()
135 ** Inputs: None
136 ** Return: CMIBoolean true if successful
137 **          CMIBoolean false if failed.
138 **
139 ** Description:
140 ** Close communication with LMS by calling the LMSFinish
141 ** function which will be implemented by the LMS
142 **
143 *****/
144 function LMSFinish()
145 {
146     var result = "false";
147     var api = getAPIHandle();
148     if (api == null)
149     {
150         alert("Unable to locate the LMS's API Implementation.\nLMSFinish was not successful.");
151         return "false";
152     }
153     else
154     {
155         // call the LMSFinish function that should be implemented by the API
156         var finishCalled = lmsFinishCalled;
157
158         lmsFinishCalled = true;
159         lmsInitCalled = false;
160         if( this.parent.apiHandle ) //changed top to parent
161         {
162             this.parent.lmsInitCalled = lmsInitCalled //changed top to parent
163             this.parent.lmsFinishCalled = lmsFinishCalled; //changed top to parent
164         }
165     }
166 }

```

Save changes.

Any new e-Learning packages you now publish will use the updated file.

### 13.7.1 Existing e-Learning Packages

It is not necessary to republish existing e-Learning packages.

All that is required is to replace the existing apiwrapper11.js file with the updated file in each e-Learning package folder location on the content server.